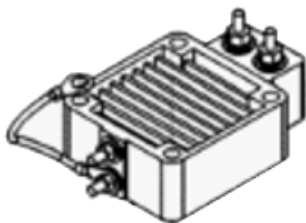




## T3FE Grid Wire Power Cable

Service Update #20-0601



### Possible Corrosion Issue With the Power Feed Cable

It has been observed on some units that the power wire from the PDU box mounted under the driver's floor to the solenoid mounted on the inside of the left front in the area of the dropped frame (shown in **red** on FIGURE #1) may have had the insulation cut allowing road chemicals to corrode the wire strands. Figures #2 & #3 show how the cable can "swell" up due to corrosion.

Should this issue be found, the cable should be replaced, please contact our Parts Department with the body # to get the proper cable.

Thanks to Scotty and the CREW at Carthage Central School  
for pointing this out!

ALL of our Service Updates can be found on the [New York Bus Sales website](#)  
Or at the [New York Head Mechanic website](#)

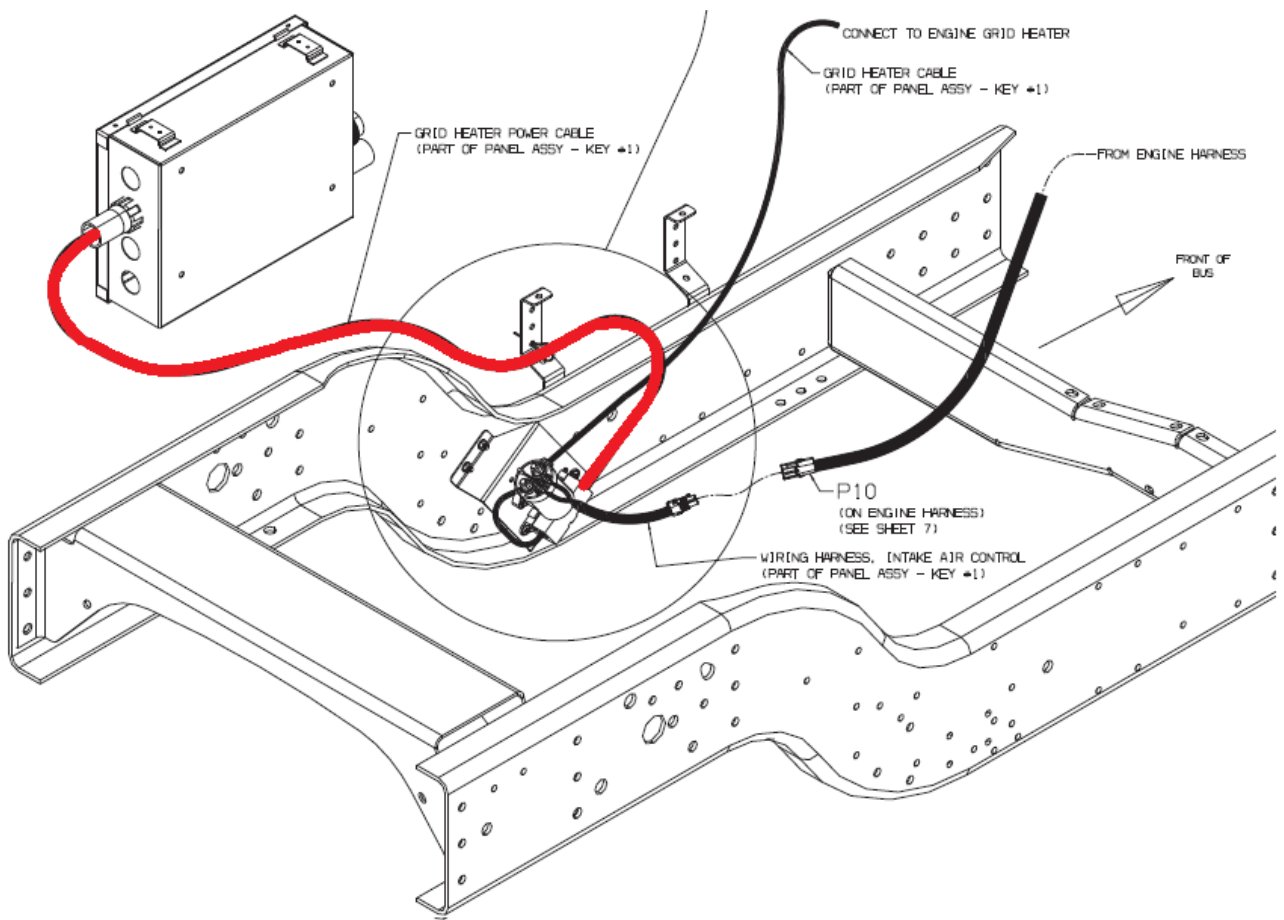


FIGURE #1

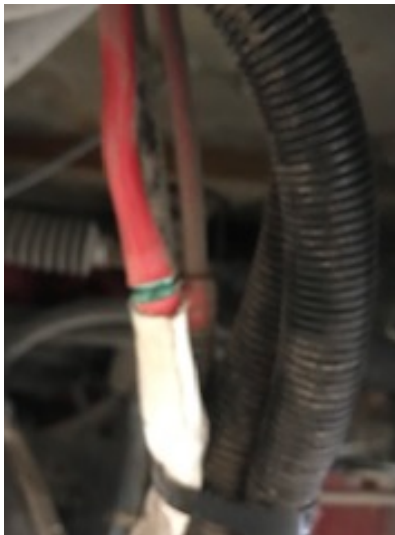


FIGURE #2

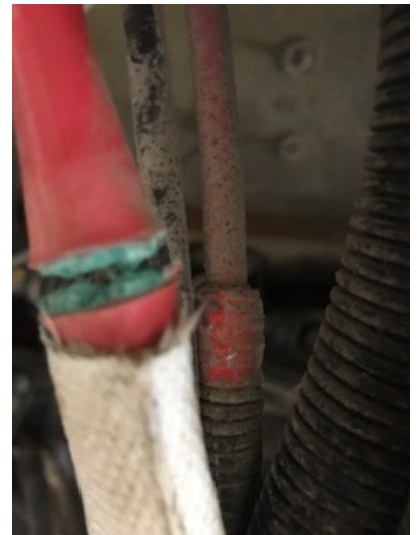


FIGURE #3

ALL of our Service Updates can be found on the [New York Bus Sales website](#)  
Or at the [New York Head Mechanic website](#)

## CONTACT OUR SERVICE OR PARTS DEPARTMENT WITH ANY QUESTIONS

### SERVICE

#### Director of Service

Ryan Hemund  
[rhemund@newyorkbussales.com](mailto:rhemund@newyorkbussales.com)  
CELL 315-561-9121

#### Chittenango: 800-962-5768

Daryl Wallace  
[dwallace@newyorkbussales.com](mailto:dwallace@newyorkbussales.com)

Brian Lamaitis  
[blamaitis@newyorkbussales.com](mailto:blamaitis@newyorkbussales.com)

Bob Reith  
[breith@newyorkbussales.com](mailto:breith@newyorkbussales.com)

Phil Tucker  
[ptucker@newyorkbussales.com](mailto:ptucker@newyorkbussales.com)

#### Albany: 866-867-1100

Ben Reiling  
[breiling@newyorkbussales.com](mailto:breiling@newyorkbussales.com)

#### Rochester: 800-463-3232

Eric Bosley  
[ebosley@newyorkbussales.com](mailto:ebosley@newyorkbussales.com)

#### Middletown: 845-609-7070

John Johnston  
[jjohnston@newyorkbussales.com](mailto:jjohnston@newyorkbussales.com)

### PARTS

#### Director of Parts

Jim Hogan  
[jhogan@newyorkbussales.com](mailto:jhogan@newyorkbussales.com)  
CELL 607-227-5794

#### Chittenango: 800-962-5768

Gari McQuade  
[gmcquade@newyorkbussales.com](mailto:gmcquade@newyorkbussales.com)

Bill Cox  
[bcox@newyorkbussales.com](mailto:bcox@newyorkbussales.com)

John Lewin  
[jlewin@newyorkbussales.com](mailto:jlewin@newyorkbussales.com)

Dave Grant  
[dgrant@newyorkbussales.com](mailto:dgrant@newyorkbussales.com)

#### Albany/Middletown: 866-867-1100

Sean Conway  
[sconway@newyorkbussales.com](mailto:sconway@newyorkbussales.com)  
Dan Haight  
[dhaight@newyorkbussales.com](mailto:dhaight@newyorkbussales.com)

#### Rochester: 800-463-3232

Steve Hibbard  
[shibbard@newyorkbussales.com](mailto:shibbard@newyorkbussales.com)  
James Roeser  
[jroeser@newyorkbussales.com](mailto:jroeser@newyorkbussales.com)

ALL of our Service Updates can be found on the [New York Bus Sales website](#)  
Or at the [New York Head Mechanic website](#)

