



Hood Alignment and Adjustment Service Update #25-0522



Don't Assume the Hood is Properly Aligned.....Check It!

We have heard of issues with hoods out of alignment where the rubber strap on one side is tighter than the other or where the hood appears higher along the top on one side or the other. And there is the possibility that the hood is rubbing on the fender extensions causing wear marks.

To properly adjust the hood, we must first understand what adjustments can be made.....and to what degree.

ALL of our Service Updates can be found on the [New York Bus Sales website](#)
Or at the [New York Hood Mechanic website](#)

First, we need to understand the parts involved in the hood adjustment. In the attached schematic of the hood (FIGURE #1), you have the following:

- #38 – Part #00088228 (2) which are the neoprene spacer plate mounted to the outer sides of the toe boxes. **Hi-lighted yellow.**
- #40 – Part#00102929 (2) which are the rubber isolators on the top of the toe boxes toward the outer edge. Circled in **RED.**
- #6 – Part #10053481 (1) which is the right hand “Guide Bracket” for the hood. **Hi-lighted yellow.**
- #37 – Part#10053482 (1) which is the left hand “Guide Bracket” for the hood. **Hi-lighted yellow.**

The basis of this is for when the hood is closed that it is resting on the rubber isolators on the toe boxes and when “latched” is held tight. We have all seen the flexibility in the hood when just opening and closing and the amount of “twist” that the hood has. Therefore, what also needs to happen is that the side-to-side movement needs to be minimized which is addressed by having the hood “guided” into place and centered on the rubber isolators by adjusting the Left Hand and Right Hand “Guide Brackets” so that when closed, the hood “slips” into place.

There are basically two adjustments to the hood, and they are adjustments in the distance between the right and left “Guide Brackets” to spacer plate. FIGURE #2 shows a large gap between the “Guide Bracket” and the spacer plate, this should be about 1/8” and to adjust, the Guide Bracket mounting holes are elongated to allow adjustment. (FIGURE #3).

Positioning the bolts for the bracket in the center of the elongated holes will get you a good starting position where then only minimal movement will be required to get the 1/8” clearance (FIGURE #4) to keep everything in alignment and tight which will allow the hood to open and close easier and lessen vibrations in the hood while traveling over bumpy roads!

ALL of our Service Updates can be found on the [New York Bus Sales website](#)
Or at the [New York Hood Mechanic website](#)



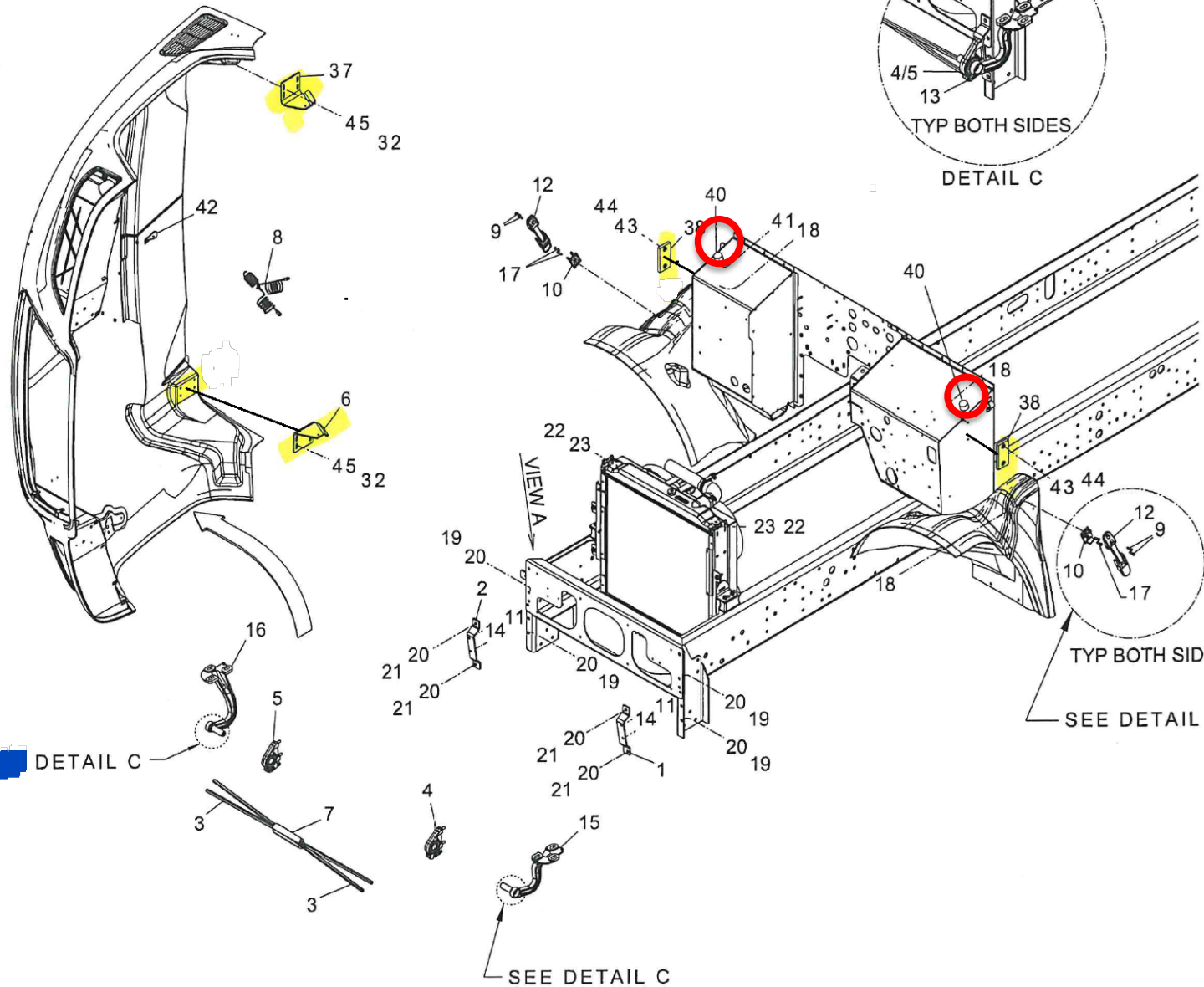
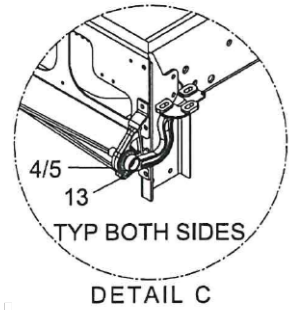
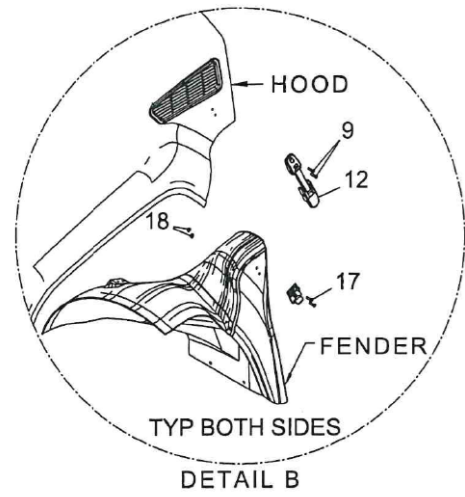
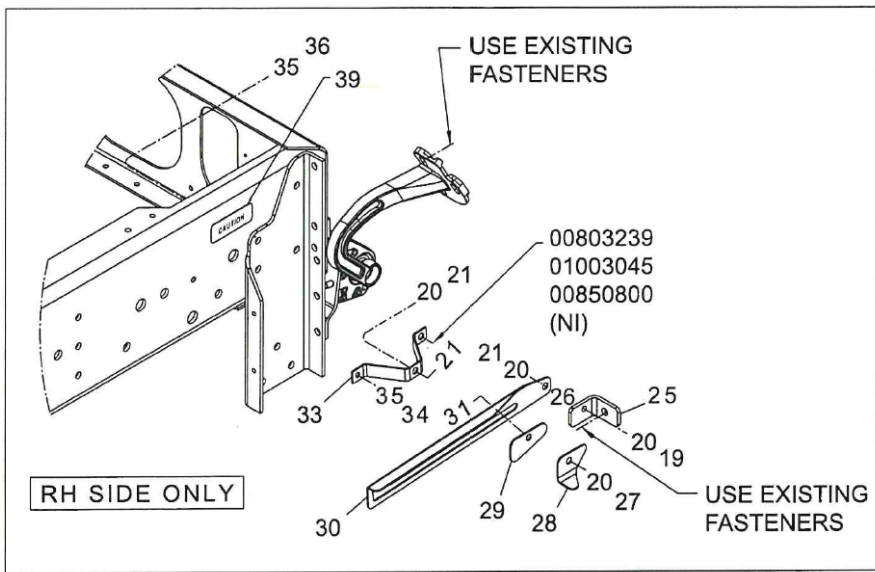


FIGURE #!



FIGURE #2



FIGURE #3

ALL of our Service Updates can be found on the [New York Bus Sales website](#)
Or at the [New York Head Mechanic website](#)



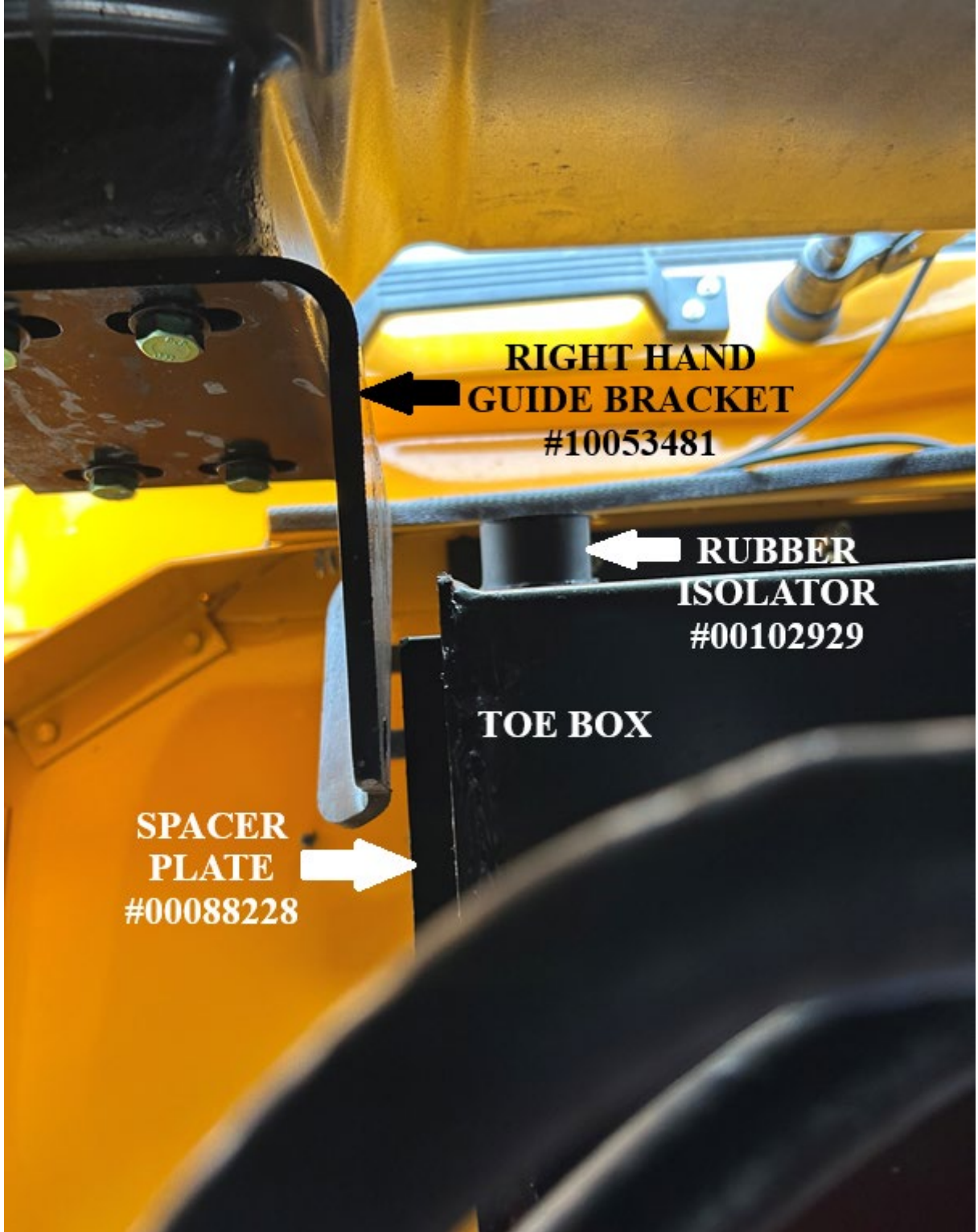


FIGURE #4

ALL of our Service Updates can be found on the [New York Bus Sales website](#)
Or at the [New York Head Mechanic website](#)

CONTACT ANY OF OUR SERVICE LOCATIONS WITH QUESTIONS

**Director of Service
Brad Dettman**

bdettman@newyorkbussales.com

Chittenango: 800-962-5768

Christine Owens

cowens@newyorkbussales.com

Bob Reith

breith@newyorkbussales.com

Phil Tucker

ptucker@newyorkbussales.com

Albany: 866-867-1100

Sean Smith

ssmith@newyorkbussales.com

Customer Support

Ben Reiling

breiling@newyorkbussales.com

Batavia: 800-463-3232

Matt Dargusch

mdargusch@newyorkbussales.com

ALL of our Service Updates can be found on the [New York Bus Sales website](#)
Or at the [New York Head Mechanic website](#)

