



Vision Gas/LPG with Code #P0504

Service Update #23-1223



Unit has CEL with code #P0504

We have seen issues where units were displaying a Check Engine Light and when diagnosing the issue, the unit was found to have code #P0504.

A “P0504” code means that the engine control module has diagnosed a fault with the brake light switch signal control. It is also known as Brake Switch A/B Correlation. Encountering this code is a reminder of a troubled brake pedal or the brake light control circuit.

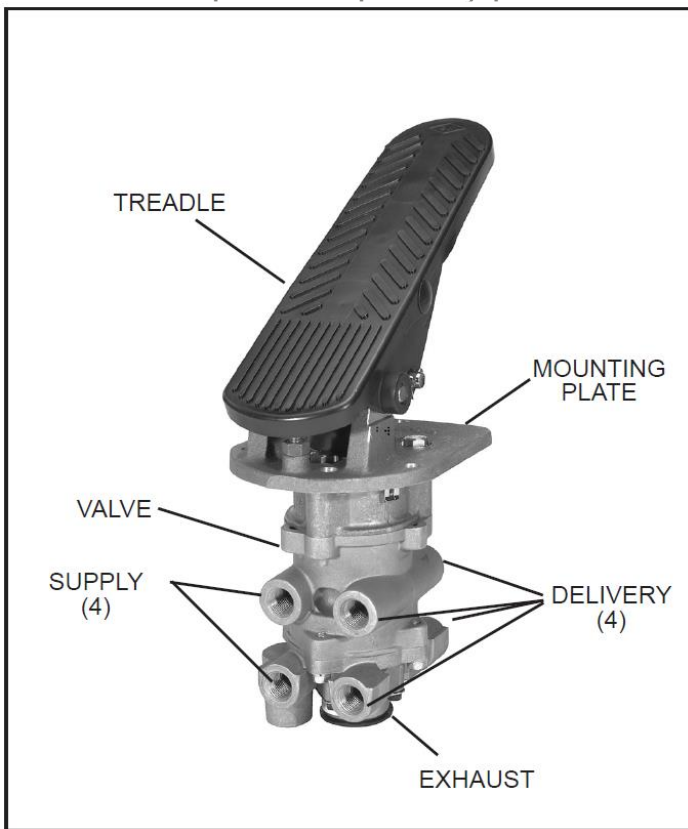
Generally, when this code is seen, the brake light switch can be adjusted (Refer to Service Update #19-1005) or may need to be replaced, but recently we have attempted to adjust and even replaced without being able to gain the proper adjustment.

ALL of our Service Updates can be found on the [New York Bus Sales website](#)
Or at the [New York Head Mechanic website](#)

Continuing to diagnose we removed the treadle valve and without disassembling found that the rubber "spring" and Spring "seat" were visibly worn (FIGURES #1 & #2).

FIGURE #3 shows the complete breakdown of the treadle valve and FIGURE #4 shows the upper portion as in FIGURE #1 & #2

Once the locknut (#16) was removed from the threaded end of the stem and spring seat nut (#25), spring seat (#26), rubber spring (#27) and primary piston (#27) were removed, it was evident the rubber spring had worn unevenly on the shaft of the primary piston and telltale evidence is found with debris from the worn spring seat and rubber spring are shown in the "cup" of the primary piston.



We are unsure exactly what the issue is but believe the rubber spring (#27) may be losing tension and causing the spring plate (#26) to gain clearance.

We believe that when the brake rod and piston from the brake pedal are applied directly on the spring plate (#26) and when the rubber spring (#27) starts to lose tension it increases the clearance between the brake pedal activator plate on the brake pedal and the brake switch bracket.

**PLEASE NOTE –
WHEN ORDERING A NEW
TREADLE VALVE, PLEASE HAVE
BODY NUMBER TO ENSURE
CORRECT PARTS ARE
SUPPLIED.**

**FURTHER INFO CAN BE FOUND IN
BENDIX SERVICE DATA RELEASE
#SD-03-830**

ALL of our Service Updates can be found on the [New York Bus Sales website](#)
Or at the [New York Head Mechanic website](#)





FIGURE #1



FIGURE #2

ALL of our Service Updates can be found on the [New York Bus Sales website](#)
Or at the [New York Head Mechanic website](#)

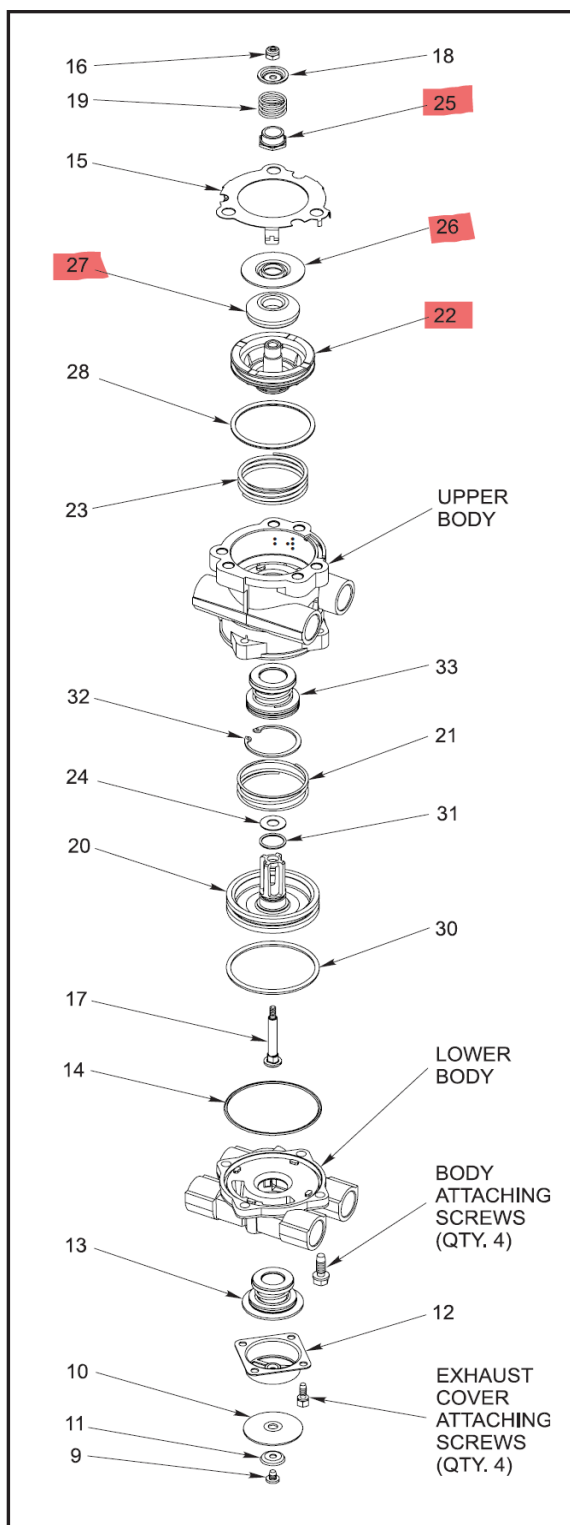


FIGURE #3

ALL of our Service Updates can be found on the [New York Bus Sales website](#)
 Or at the [New York Head Mechanic website](#)



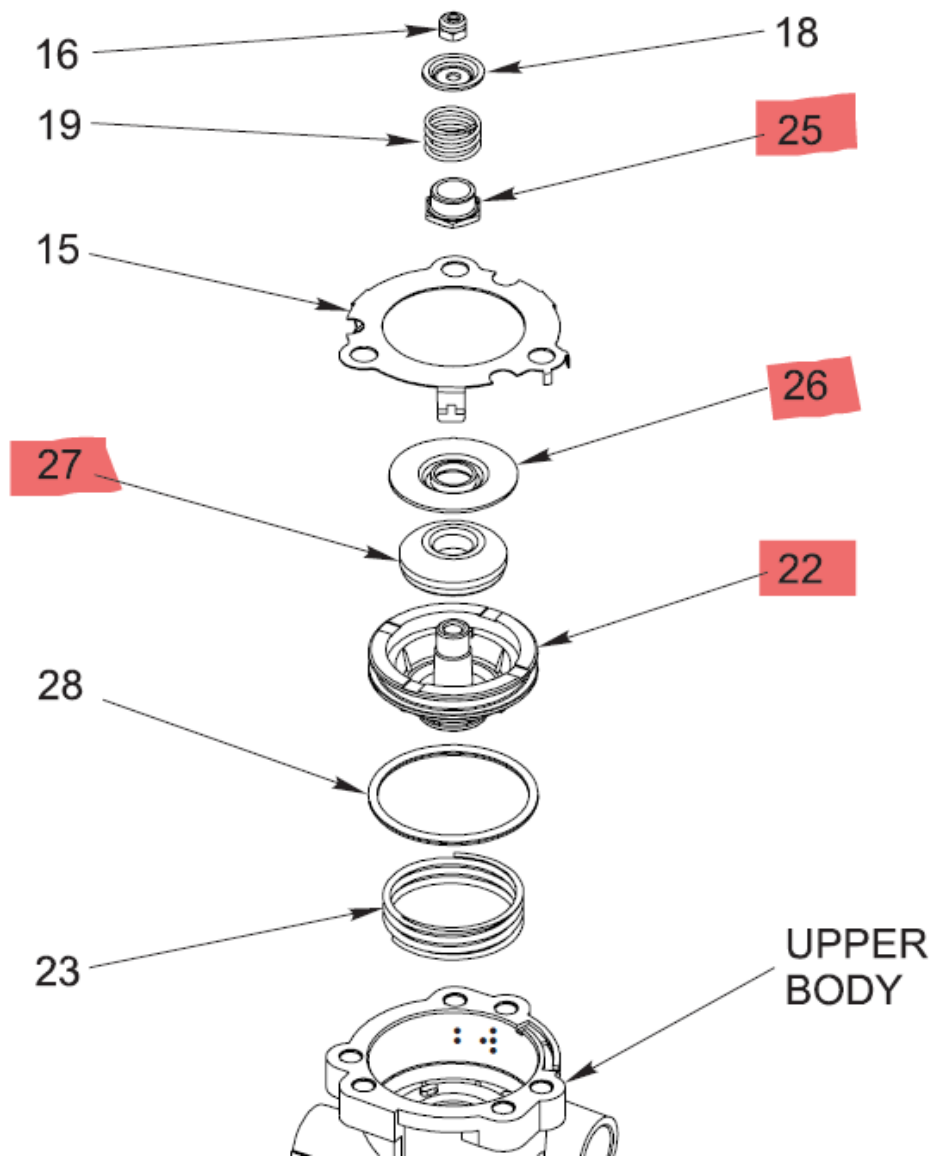


FIGURE #4

ALL of our Service Updates can be found on the [New York Bus Sales website](#)
Or at the [New York Head Mechanic website](#)



FIGURE #5

ALL of our Service Updates can be found on the [New York Bus Sales website](#)
Or at the [New York Head Mechanic website](#)





FIGURE #6

ALL of our Service Updates can be found on the [New York Bus Sales website](#)
Or at the [New York Head Mechanic website](#)

CONTACT ANY OF OUR SERVICE LOCATIONS WITH QUESTIONS

**Director of Service
Ryan Hemund**

rhemund@newyorkbussales.com

Chittenango: 800-962-5768

Brian Lamaitis

blamaitis@newyorkbussales.com

Bob Reith

breith@newyorkbussales.com

Phil Tucker

ptucker@newyorkbussales.com

Albany: 866-867-1100

Ben Reiling

breiling@newyorkbussales.com

Batavia: 800-463-3232

Andrew Faskel

afaskel@newyorkbussales.com

Middletown: 845-609-7070

Moncia Cherry

mcherry@newyorkbussales.com

ALL of our Service Updates can be found on the [New York Bus Sales website](#)
Or at the [New York Head Mechanic website](#)

