



NEXTGEN Stamped Seat Leg “V” Notch Cover

Service Update #21-0223



**Lap Belt Ready
(LBR)**



**3-Point Belts
(3PT)**



**Child Restraint
(CR)**

NEXTGEN Stamped “V” Notched Steel Leg

Recently we were told of an issue where there was a rather sharp point on the leg of a NextGen seat which was found to be caused by a plastic rivet stem used to hold the plastic “aesthetic” piece to the stamped steel leg. FIGURE #1 shows the leg, FIGURE #2 shows the cover with the rivet in the upper corner and FIGURE #3 shows the “V” cut in the leg and back of the cover.

Should a rivet stem be found to be sticking out, a file or die grinder can be used to smooth.

We were questioned further as to why these were not present on all seat legs, the “V” notch leg is required to meet FMVSS school bus passenger seat standards in certain applications and not required in all set positions. The leg with the “V” notch is only required in those positions where the added angle bracket is required as shown in FIGURE #4.

The plastic covers are not required but installed for appearance, the covers and rivets are sold should you want to replace, FIGURE #5 shows the items with corresponding part numbers.

ALL of our Service Updates can be found on the [New York Bus Sales website](#)
Or at the [New York Head Mechanic website](#)



FIGURE #1



FIGURE #2

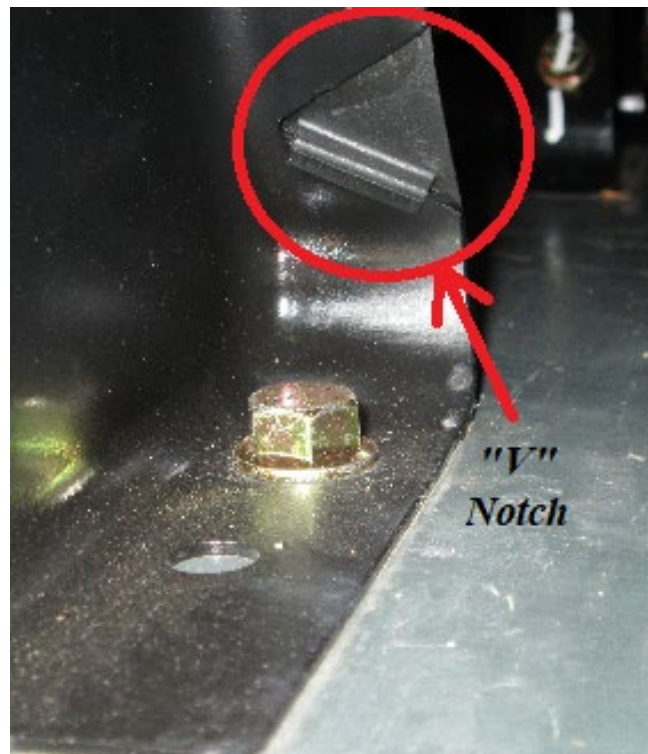


FIGURE #3

ALL of our Service Updates can be found on the [New York Bus Sales website](#)
Or at the [New York Head Mechanic website](#)

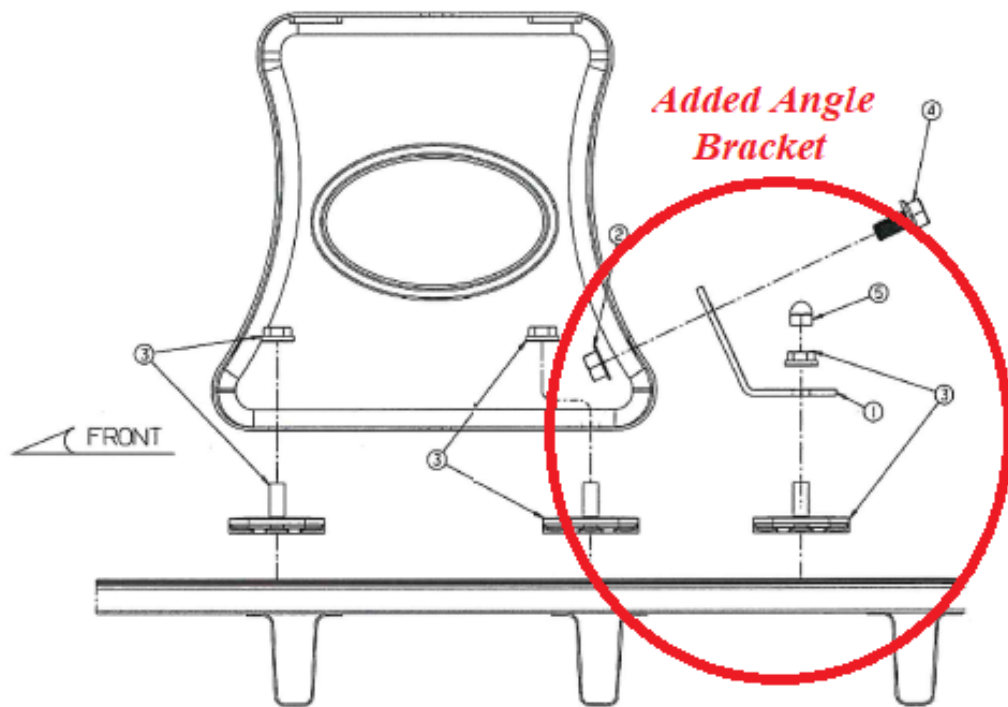
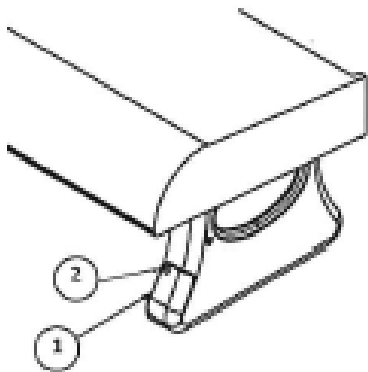


FIGURE #4



ITEM	PART #	DESCRIPTION
1	800-529	COVER, NEXTGEN LEG V-NOTCH - LH
1	800-530	COVER, NEXTGEN LEG V-NOTCH - RH
2	600-654	PLASTIC COVER RIVET

FIGURE #5

Thanks to Jeff and the crew at Jamesville Dewitt Central School for bringing this to our attention!

ALL of our Service Updates can be found on the [New York Bus Sales website](#)
Or at the [New York Head Mechanic website](#)



CONTACT OUR SERVICE OR PARTS DEPARTMENT WITH ANY QUESTIONS

SERVICE

Director of Service

Ryan Hemund
rhemund@newyorkbussales.com
CELL 315-561-9121

Chittenango: 800-962-5768

Daryl Wallace
dwallace@newyorkbussales.com

Brian Lamaitis
blamaitis@newyorkbussales.com

Bob Reith
breith@newyorkbussales.com

Phil Tucker
ptucker@newyorkbussales.com

Albany: 866-867-1100

Ben Reiling
breiling@newyorkbussales.com

Rochester: 800-463-3232

Brandon Shepard
bshepard@newyorkbussales.com

Middletown: 845-609-7070

Moncia Mc Donald
mmcdonald@newyorkbussales.com

PARTS

Director of Parts

Dave Reichel
dreichel@newyorkbussales.com
CELL 315-396-5709

Chittenango: 800-962-5768

Gari McQuade
gmcquade@newyorkbussales.com

Bill Cox
bcox@newyorkbussales.com

John Lewin
jlewin@newyorkbussales.com

Dave Grant
dgrant@newyorkbussales.com

Albany/Middletown: 866-867-1100

Sean Conway
sconway@newyorkbussales.com

Dan Haight
dhaight@newyorkbussales.com

Rochester: 800-463-3232

Steve Hibbard
shibbard@newyorkbussales.com

James Roeser
jroeser@newyorkbussales.com

ALL of our Service Updates can be found on the [New York Bus Sales website](#)
Or at the [New York Head Mechanic website](#)

