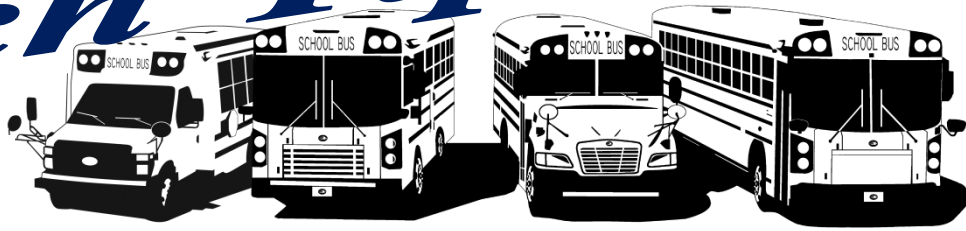


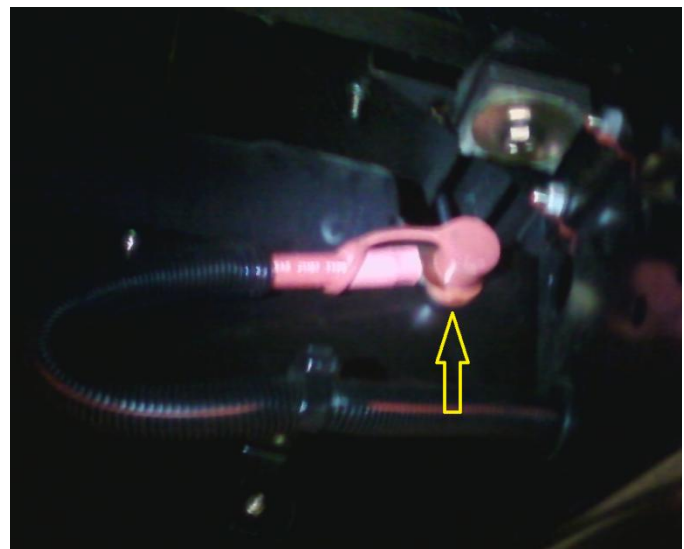
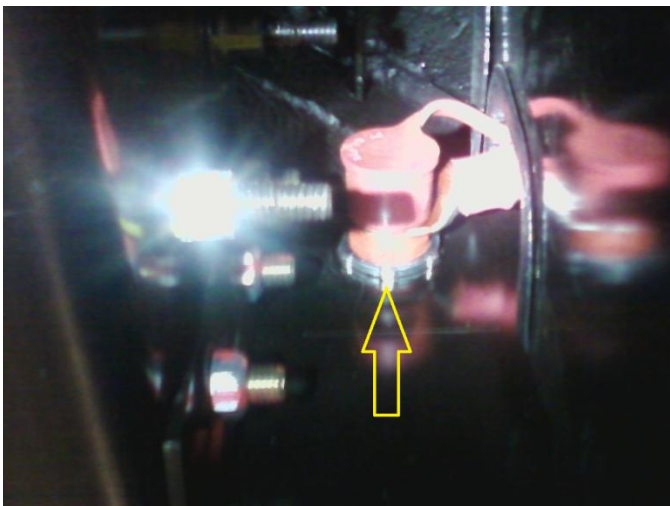
# Tech Tip

FROM YOUR FRIENDS AT  
NEW YORK BUS SALES!

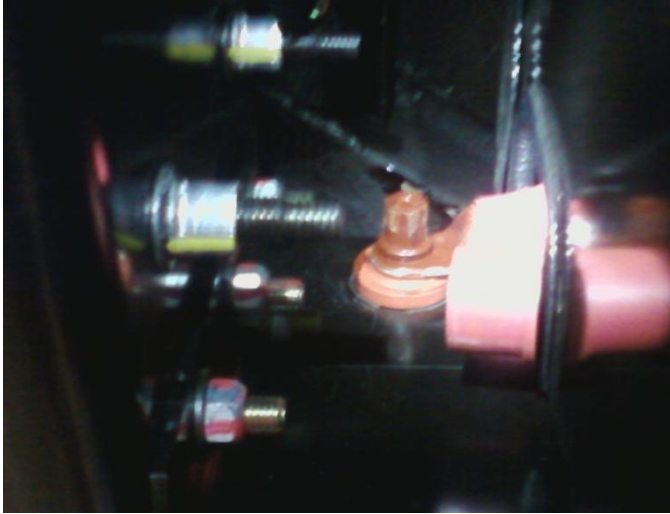


## Chassis Mounted Battery Box Stud

- Complaint –** When servicing the batteries, it seems the power cable is “loose” where the cable goes through the back of the battery box.
- Cause –** There is a power stud mounted behind the battery box and with the battery tray moving in and out pulling on the cable the stud loosens.
- Correction –** Figure #1 shows the stud which is mounted to the battery box and as you can see there is a spanner nut which holds the stud to the box. Figure #2 shows the stud to the rear of the box. One thing which we have found is that where the spanner nut is located it is difficult to get a spanner wrench or socket on the nut and tighten. If you disconnect the batteries, remove the cables and then remove the stud and re-install 180\* so that the spanner nut is located to the rear you can get a better “grip” on it with your spanner wrench or socket and adding a drop of loctite will help ensure the stud will not loosen with future movement of the cables. See figures #3 and #4-



**FIGURE #1**



**FIGURE #2**



**FIGURE #3**

**FIGURE #4**

**PLEASE NOTE – BLUE BIRD WILL BE CHANGING THE ORIENTATION OF THE STUD/SPANNER NUT IN PRODUCTION**

*Contact Our Service Department With Any Questions*

**CHITTENANGO** – phone 800-962-5768 or

Daryl Wallace : [dwallace@newyorkbussales.com](mailto:dwallace@newyorkbussales.com)

Brian Lamaitis : [blamaitis@newyorkbussales.com](mailto:blamaitis@newyorkbussales.com)

**ROCHESTER** – phone 800-463-3232 or

Gary Chichester: [gchichester@newyorkbussales.com](mailto:gchichester@newyorkbussales.com)

**ALBANY** – phone 866-867-1100 or

Ben Reiling: [breiling@newyorkbussales.com](mailto:breiling@newyorkbussales.com)

**WARRANTY** – 800-962-5768 ext 237

Morgan Jenkins: [mjenkins@newyorkbussales.com](mailto:mjenkins@newyorkbussales.com)

*Or Your Customer Support Representative*

*West*

Michael Panzica – [mpanzica@newyorkbussales.com](mailto:mpanzica@newyorkbussales.com)

Cell 716-908-3186

*Central*

Jeremie “JJ” Richmond –

[jrichmond@newyorkbussales.com](mailto:jrichmond@newyorkbussales.com)

Cell 315-559-3999

*East*

Gary Bigness – [gbigness@newyorkbussales.com](mailto:gbigness@newyorkbussales.com)

Cell 845-500-3707



ALL of our Tech Tips can be found on the New York Bus Sales website at

<http://www.newyorkbussales.com/pages/bulletins.cfm>

Or at the New York Head Mechanic website at

<http://www.nvhma.org/viewforum.php?f=2&start=0>