

# Tech Tip

FROM YOUR FRIENDS AT  
NEW YORK BUS SALES!



## A3/BBCV/D3 Illuminated School Sign

- Complaint –** We've seen premature failure of our destination sign light bulbs!
- Cause –** With the change from the piano hinge previously used to the new "3" hinge system for the sign box door, it was found that just using the hinge points as a ground did not prove heavy enough on the "3" point system to provide ground enough which lead to bulbs failing pre-maturely.
- Correction –** A separate ground strap should be added to the door. This is can be done by taking a 18" piece of 14 gauge wire and crimping an eyelet to each end. Using #8 X3/4" self-tapping screws on the front sign you should attach one end to the light bar and the other end up inside the sign compartment to the first body bow (Figures #2 & #3). On the rear, using the same size #8X3/4" self tapping screws, attach one end to the light bar and the other to the support at the side of the school sign (Figure #4)

**PLEASE NOTE –** Blue Bird made a change and has been adding these in production since the beginning of this year!



Figure #1

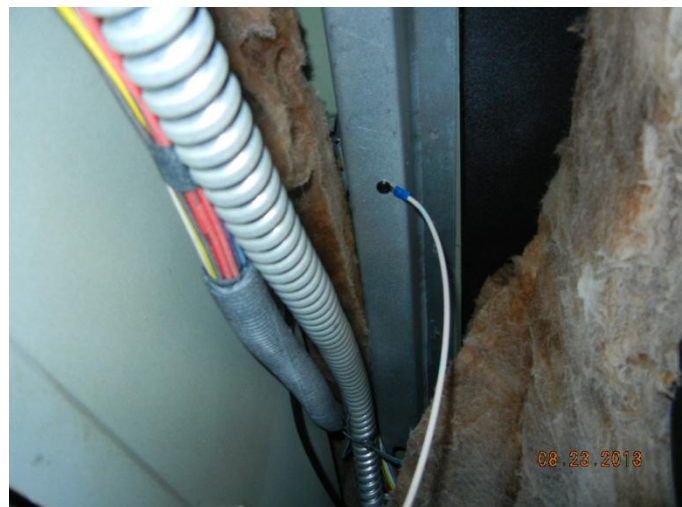


Figure #2



**Figure #3**



**A BIG Thank You to Roger at  
Phelps-Clifton Springs Central School**

**Parts Manager**

**Gari McQuade**

[gmcquade@newyorkbussales.com](mailto:gmcquade@newyorkbussales.com)

**Chittenango Facility**

**Bill Cox**

[bcox@newyorkbussales.com](mailto:bcox@newyorkbussales.com)

**Dave Grant**

[dgrant@newyorkbussales.com](mailto:dgrant@newyorkbussales.com)

**Don Kipp**

[dkipp@newyorkbussales.com](mailto:dkipp@newyorkbussales.com)

**Rochester Facility**

**Jeremy Pilot**

[jpilot@newyorkbussales.com](mailto:jpilot@newyorkbussales.com)

**Ravena Facility**

**Dan Provencher**

[dprovencher@newyorkbussales.com](mailto:dprovencher@newyorkbussales.com)

**Contact Our Service Department With Any Questions**

**CHITTENANGO** – phone 800-962-5768 or

Daryl Wallace : [dwallace@newyorkbussales.com](mailto:dwallace@newyorkbussales.com)

Brian Lamaitis : [blamaitis@newyorkbussales.com](mailto:blamaitis@newyorkbussales.com)

**ROCHESTER** – phone 800-463-3232 or

Gary Chichester: [gchichester@newyorkbussales.com](mailto:gchichester@newyorkbussales.com)

**ALBANY** – phone 866-867-1100 or

Ben Reiling: [breiling@newyorkbussales.com](mailto:breiling@newyorkbussales.com)

Steve Searles: [ssearles@newyorkbussales.com](mailto:ssearles@newyorkbussales.com)

**WARRANTY** – 800-962-5768 ext 237

Morgan Jenkins: [mjenkins@newyorkbussales.com](mailto:mjenkins@newyorkbussales.com)

**PLEASE ALSO NOTE OUR NEW CUSTOMER  
SUPPORT REPRESENTATIVES**

**EAST**

Gary Bigness: [gbigness@newyorkbussales.com](mailto:gbigness@newyorkbussales.com)

Cell 845-500-3707

**CENTRAL**

JJ Richmond: [jrichmond@newyorkbussales.com](mailto:jrichmond@newyorkbussales.com)

Cell 315-559-3999

**WEST**

Mike Panzica: [mpanzica@newyorkbussales.com](mailto:mpanzica@newyorkbussales.com)

Cell 716-908-3186

ALL of our Tech Tips can be found on the New York Bus Sales website at

<http://www.newyorkbussales.com/pages/bulletins.cfm>

Or at the New York Head Mechanic website at

<http://www.nyhma.org/viewforum.php?f=2&start=0>