

Tech Tip

FROM YOUR FRIENDS AT
NEW YORK BUS SALES!



BBCV-Vision/CAT C7 Heat Loss & Added Coolant Pressure

- Complaint –** No heat in the unit-Coolant level is correct and the system has been bled numerous times
- Cause –** Draining the surge tank and looking for obstructions we found that the tank has “nubs” or caps molded into the tank that have broken free and traveled through the cooling system.
- Correction –** Follow the steps below to see if this is the issue.....At the bottom of the page is the breakdown from CAT on the parts used (Figure #1).....NOTE that you will want to make sure this is the set up using your engine serial number-Basically it is C7S2048 and up.
- #1 – Drain the coolant from the surge tank and inspect by looking inside to see if the inside of the tank is smooth or if there are spots where the “nubs” have broken free-
 - #2 – If you can see evidence of the nubs being gone, follow the lower radiator hose to where it connects to the engine-there will be a housing – Photo #1 shows the unit with a new housing
 - #3 – Remove the hoses from the housing and remove the housing from the engine – Photo #2.....be mindful when removing as to not tip or turn the housing upside down, or if you have to watch for the small plastic nubs falling out.
 - #4 – Once off, inspect and look for the nubs which if are the issue will be in the port shown in Photo #3
 - #5 – Remove nubs, clean housing and fitting, reseal, replace gasket and reassemble.
 - #6 – Replace surge tank, fill coolant system, bleed system and pressure test.
 - #7 – Run unit to operating temperature and make sure there is now heat

UPDATE 3/27/15 – We have just found that this also blocks coolant flow which will add pressure to the cooling system and cause coolant to be pushed out the overflow!

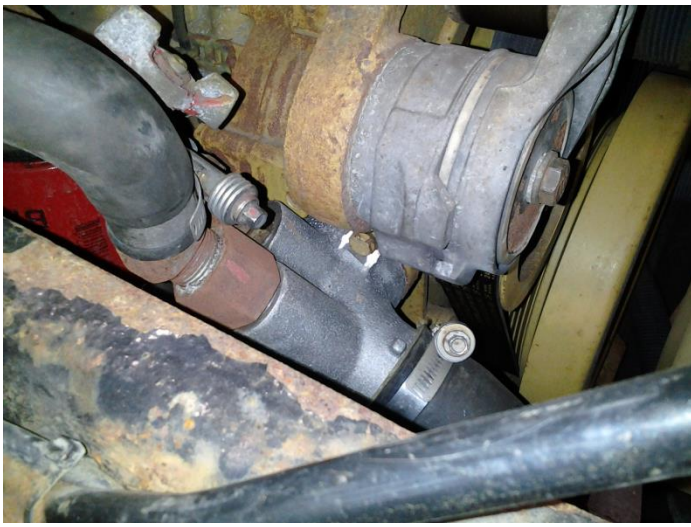


Photo #1



Photo #2



Photo #3

Graphic Only

GRAPHIC #1
-01-1-1-6-000

C7 On-highway Engine
Media Number - SEBP4353-33 | Publication Date - 01/03/2015 | Date Updated - 10/03/2015
[View Latest Kit Information](#) 102826459

293-4467 ELBOW GP-WATER
S/N C7S1-428; C7S1461-UP
PROVIDES A FORWARD FACING WATER INLET ELBOW WITH A 51-MM SINGLE BEAD HOSE CONNECTION AND TWO #8 PORTS FOR OEM CONNECTION
ALSO AN ATTACHMENT

ENTIRE GROUP				
Ref.	Qty.	NPR Note	Part No.	Part Name
Grp		NPS	293-4467	ELBOW GP-WATER

INDIVIDUAL PARTS					
Loc. Ref.	Qty.	NPR Note	Part No.	Req. Qty.	Part Name
<input type="checkbox"/> 1		NPS	200-2258	1	GASKET
<input type="checkbox"/> 2		NPS	293-4466	1	ELBOW
<input type="checkbox"/> 3		NPS	3K-0360	2	SEAL-O-RING
<input type="checkbox"/> 4		NPS M	6V-3940	2	BOLT (M8X1.25X25-MM)
<input type="checkbox"/> 5		NPS	9M-1974	2	WASHER-HARD (8.8X16X2-MM THK)
<input type="checkbox"/> 6		NPS	95-4185	2	PLUG

Key:
M - METRIC PART

Copyright 1992 - 2015 Caterpillar Inc. All Rights Reserved. Private Network For SIS Licensees. Wed Mar 25 2015 11:04:27 GMT-0400 (Eastern Daylight Time)

Figure #1

Contact Our Service Department With Any Questions

CHITTENANGO – phone 800-962-5768 or
Daryl Wallace : dwallace@newyorkbussales.com
Brian Lamaitis : blamaitis@newyorkbussales.com

ROCHESTER – phone 800-463-3232 or
Gary Chichester: gchichester@newyorkbussales.com

ALBANY – phone 866-867-1100 or
Ben Reiling: breiling@newyorkbussales.com
Steve Searles: ssearles@newyorkbussales.com

WARRANTY – 800-962-5768 ext 237
Morgan Jenkins: mjenkins@newyorkbussales.com

**PLEASE ALSO NOTE OUR NEW CUSTOMER
SUPPORT REPRESENTATIVES**

EAST

Gary Bigness: gbigness@newyorkbussales.com
Cell 845-500-3707

CENTRAL

JJ Richmond: jrichmond@newyorkbussales.com
Cell 315-559-3999

WEST

Mike Panzica: mpanzica@newyorkbussales.com
Cell 716-908-3186



**THANK YOU TO DAN
FORQUELL FROM
SPENCERPORT CENTRAL
SCHOOL FOR POINTING
THIS OUT TO US!!!!**

ALL of our Tech Tips can be found on the New York Bus Sales website at
<http://www.newyorkbussales.com/pages/bulletins.cfm>
Or at the New York Head Mechanic website at
<http://www.nyhma.org/viewforum.php?f=2&start=0>