

Tech Tip



From your friends at New York Bus Sales

Complaint - There are new crossover mirrors on our buses and the driver's cannot see the warning lights -

Cause - This is correct – Blue Bird has gone to the Rosco “Eye-Max LP/Hawk” crossover mirror as it is currently considered the optimum crossover mirror for student safety. The new design replaces the popular “Hawk-Eye” and “Mini Hawk-Eye” but with even greater performance.

Correction - If the warning lights cannot be seen then the mirrors may not be properly adjusted. Attached please find Rosco's “Field of Vision” which gives the proper set up to meet FMVSS guidelines and assure driver's have proper visibility for optimum safety.

UPDATE – 10/8/11 – FOR MOST DRIVERS THE CROSSOVER MIRRORS, EYE-MAX LP CANNOT BE ADJUSTED TO GIVE A VIEW OF THE WARNING LIGHTS AND WHILE WE KNOW THAT THE REQUIREMENT IS FOR THE DRIVER TO CHECK THE WARNING LIGHTS AS PART OF THEIR PRE-TRIP MANY ALSO CHECK THE WARNING LIGHTS THROUGHOUT THEIR RUNS WITH THE CROSSOVER MIRRORS.

WHILE THE EYE-MAX LP GIVES UP TO A 33% LARGER VIEW OF OBJECTS AND IS DEFINITELY A SUPERIOR CROSSOVER MIRROR TO THOSE PREVIOUSLY USED, WE HAVE FOULD A VIABLE SOLUTION WHERE DRIVERS CAN STILL USE THESE MIRRORS AND ALSO GET A VIEW OF THEIR WARNING LIGHTS!

ADDING A ROSCO 801D MIRROR TO THE UPPER RIGHT HAND REARVIEW MIRROR BRACKET GIVES YOU A DIRECT SIGHTLINE TO THE FRONT WARNING LIGHTS!

PLEASE SEE FIGURES #1 thru #4



Eye-Max LP® left side as seen by driver

Asymmetric Cross View Mirror System

The Eye-Max LP™ represents the next step in the evolution of cross view mirrors. It improves on the performance of the already successful Hawk-Eye® and Mini-Hawk-Eye® mirrors which have been the “Workhorses” of the school bus industry for the past fifteen years. The novelty of the Eye-Max LP™ is the revolutionary asymmetric shape of its mirror lens. Different sections throughout the mirror yield optimum viewing parameters for specific danger zones around the bus. These asymmetric mirror divisions are designed to increase image-size and coverage in all areas around the bus.

- Enhanced definition (larger image) of passengers passing through the danger zones around a school bus
- Lower profile reduces forward blind spots
- Enhanced coverage of dangerous passing traffic on driver side during load and unload stops
- Surpasses System “B” mirror requirements per FMVSS-111

Figure #1

PLEASE NOTE: Above in Figure #1 is information on the new mirror system along with an attached brochure.....

More information can be found at www.roscomirrors.com

**SPECIAL THANKS TO MITCH AT
TRUMANSBURG CENTRAL SCHOOL
FOR POINTING THIS OUT!**

WORKING TOGETHER, ROSCO AND NEW YORK BUS SALES HAS COME UP
WITH THE FOLLOWING KIT TO INSTALL THESE TO YOUR UNITS-

PART # 805DX

PRICE \$12.36

THESE CAN ALSO BE ADDED AS AN OPTION TO YOUR NEW BUS ORDER

OPTION #BDY130

PRICE \$25.28



FIGURE #2

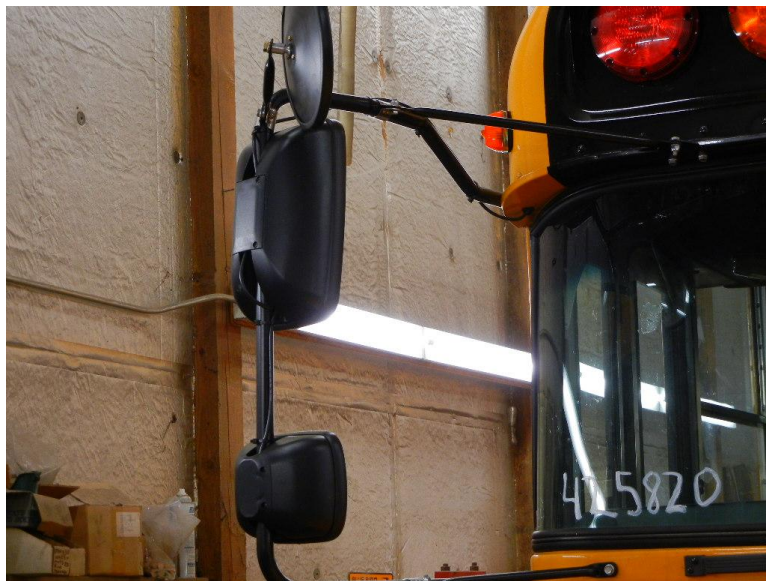


FIGURE #3



FIGURE #4

Contact Our Service Department With Any Questions

CHITTENANGO – phone 800-962-5768 or
Daryl Wallace : dwallace@newyorkbussales.com
Brian Lamaitis : blamaitis@newyorkbussales.com
ROCHESTER – phone 800-463-3232 or
Gary Chichester: gchichester@newyorkbussales.com
ALBANY – phone 866-867-1100 or
Ben Reiling: breiling@newyorkbussales.com
Steve Searles: ssearles@newyorkbussales.com
WARRANTY – 800-962-5768 ext 237
Morgan Jenkins: mjenkins@newyorkbussales.com



ALL of our Tech Tips can be found on the New York Bus Sales website at
<http://www.newyorkbussales.com/pages/bulletins.cfm>
Or at the New York Head Mechanic website at
<http://www.nyhma.org/viewforum.php?f=2&start=0>

