

Tech Tip



From your friends at New York Bus Sales

- Complaint -** The belt “squeals” and replacing it only stops the issue for a short time.
- Cause -** Belt misalignment at the power steering pulley
- Correction -** The pulley will need to be pushed onto the shaft about a 1/16”- 1/8” You can determine that this is the issue by inspecting the pulley on the P/S pump and as to do pay special attention to the rear “lips” of the pulley grooves and look for signs of rubber build up as seen in Figure #1 – You may also see where paint is being worn from the inside outer edge of the pulley as shown in Figure #1
If this is the case you can look at the pulley placement on the shaft and you will notice that the shaft is either slightly recessed or just even with the outer pulley edge as shown in Figure #2
GM makes a tool as do the major tool companies for pulling and pushing these pulleys on so using one of those or a bolt, nut and some washers you can fabricate your own “tool” to push the pulley back.
Using what you have push the pulley back slightly unit the shaft just protrudes slightly as shown in figure #3

PLEASE NOTE-If you have availability of a “laser” belt alignment tool that can be used to precisely align the belt!



Figure #1

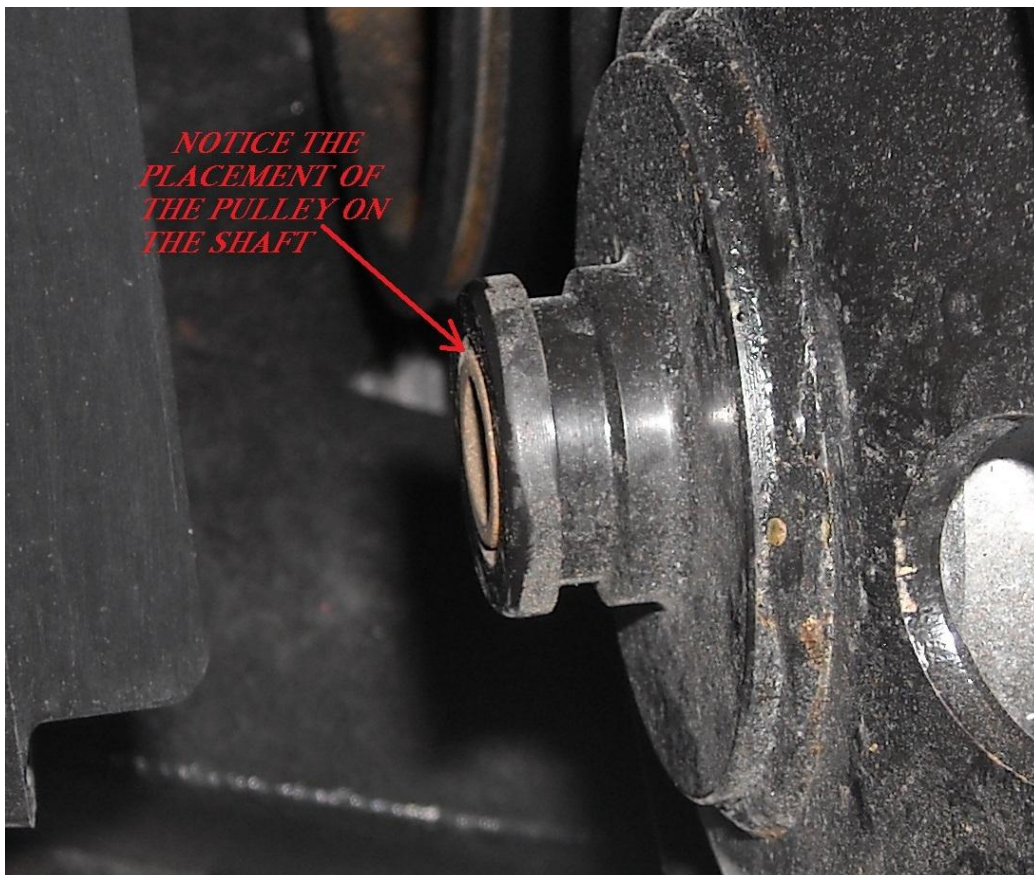


Figure #2

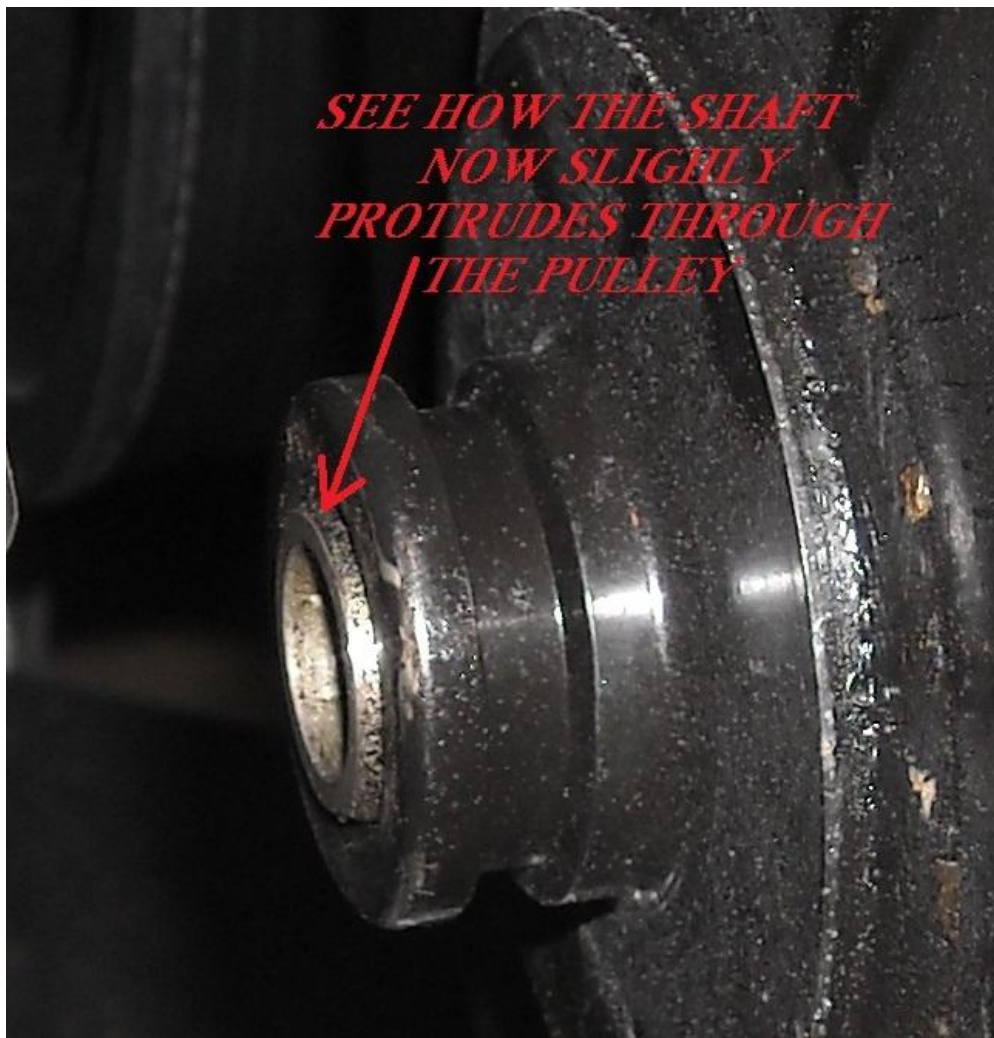


Figure #3

*Thanks to Mike Firstium
At Our Ravenna Facility for
Remembering from his GM
days!*

Contact Our Service Department with Any Questions

CHITTENANGO – phone 800-962-5768 or
Daryl Wallace: dwallace@newyorkbussales.com
Brian Lamaitis: blamaitis@newyorkbussales.com

ROCHESTER – phone 800-463-3232 or
Gary Chichester: gchichester@newyorkbussales.com

ALBANY – phone 866-867-1100 or
Ben Reiling: breiling@newyorkbussales.com
Steve Searles: ssearles@newyorkbussales.com

WARRANTY – 800-962-5768 ext.237
Morgan Jenkins: mjenkins@newyorkbussales.com



ALL of our Tech Tips can be found on the New York Bus Sales website at
<http://www.newyorkbussales.com/pages/bulletins.cfm>