

GM/MICRO BIRD BATTERY CABLE ISSUE

Service Update #21-0513

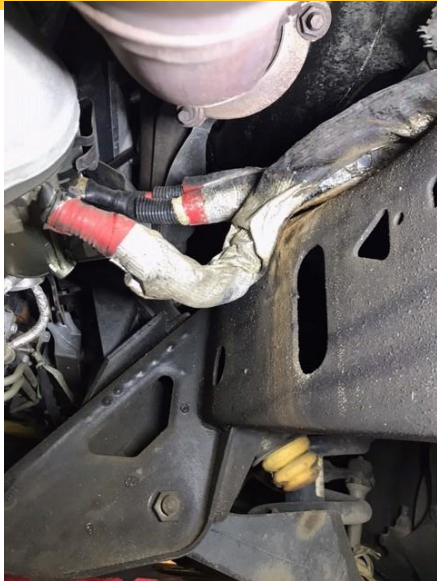


FIGURE #1

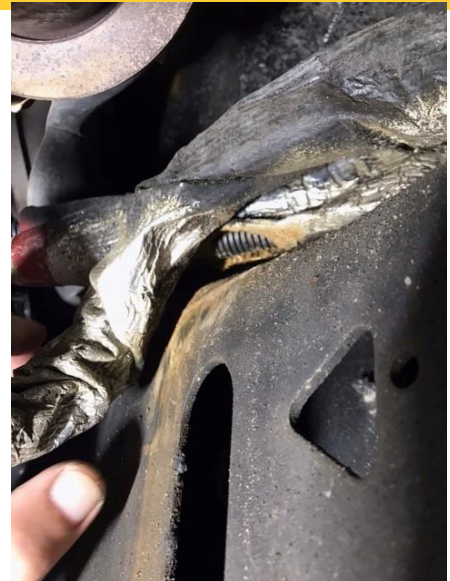


FIGURE #2

GM/MICRO BIRD BATTERY CABLE RUBS ON FRAME RAIL

It has been found on units equipped with auxiliary batteries mounted in a body mounted battery compartment that the cables feeding power to the starter run over the frame rail have rubbed through the protective sheathing. Initially it was noted by the streaking of the frame as shown in Figure #1 above and once the cables were lifted it was found where the sheathing had worn through as shown in FIGURE #2.

This should be checked during PM service and addressed in a manner to protect or to move above the frame.

ALL of our Service Updates can be found on the [New York Bus Sales website](#)
Or at the [New York Head Mechanic website](#)

CONTACT OUR SERVICE OR PARTS DEPARTMENT WITH ANY QUESTIONS

SERVICE

Director of Service

Ryan Hemund
rhemund@newyorkbussales.com
CELL 315-561-9121

Chittenango: 800-962-5768

Daryl Wallace
dwallace@newyorkbussales.com

Brian Lamaitis
blamaitis@newyorkbussales.com

Bob Reith
breith@newyorkbussales.com

Phil Tucker
ptucker@newyorkbussales.com

Albany: 866-867-1100

Ben Reiling
breiling@newyorkbussales.com

Rochester: 800-463-3232

Brandon Shepard
bshepard@newyorkbussales.com

Middletown: 845-609-7070

Moncia Mc Donald
mmcdonald@newyorkbussales.com

PARTS

Director of Parts

Dave Reichel
dreichel@newyorkbussales.com
CELL 315-396-5709

Chittenango: 800-962-5768

Gari McQuade
gmcquade@newyorkbussales.com

Bill Cox
bcoc@newyorkbussales.com

Dave Grant
dgrant@newyorkbussales.com

Albany/Middletown: 866-867-1100

Sean Conway
sconway@newyorkbussales.com

Dan Haight
dhaight@newyorkbussales.com

Rochester: 800-463-3232

James Roeser
jroeser@newyorkbussales.com

ALL of our Service Updates can be found on the [New York Bus Sales website](#)
Or at the [New York Head Mechanic website](#)

