

# Tech Tip



*From your friends at New York Bus Sales*

**Complaint -** Drivability – Unit stumbles and in a severe instance unit will quit. May cause a hard or extended start.

**Cause -** The “multi” valve in the tank has a solenoid externally mounted which lies just in under the inspection cover. Even though we have tried sealing the cavity where the valve sits, changes in temperature as well as our famous NORTHEAST road chemicals cause a nice mixture which tends to corrode the solenoid contacting surface and seeing this is the solenoid which feeds fuel the solenoid shutting due to this corrosion causes the motor to lack for fuel.

**Correction -** FIRST – Check to see if this is the issue by following the instructions below

- Remove the cover from the multi-valve locate in the right rear fuel tank....you will notice from the evident water that may run out and the signs of a water line as in Figure #2 that this may be the issue (Figure #1)
- Locate the fuel supply solenoid (Figure #1)
- Remove the “E” clip and washer (Figures #3 &4) from the Solenoid and inspect the solenoid as well as the solenoid stud base – Notice corrosion (Figure #5)
- Clean the stud and solenoid with steel-wool to remove corrosion and then coat the stud and the bottom of the solenoid with common Vaseline as shown in Figure #6 & 7.
- Locate a good product which displaces water and acts against corrosion – We use “Fluid Film” (Figure #8)
- Spray the product in the Multi-Valve cavity (Figure #9) and then also on the “O” ring of the cover (Figure #10) – This will help with future issues concerning water!
- Next coat the threads of the wing-nuts which hold the cover on with never-seize (Figure #11) and install the cover
- As a further preventative measure, coat the cover completely with Fluid Film (Figure #12)

**SECOND-**

**PLEASE NOTE – THIS SHOULD BE A PART OF “AT LEAST” ANNUAL MAINTENANCE!**

**BUT – IT NEVER HURTS TO AT LEAST POP THE CAP AND LOOK MORE OFTEN!!**



**Figure #1**



**Figure #2**



**Figure #3**



**Figure #4**



Sorry for the poor photo, but you can see the corrosion around the solenoid base



Figure #5



Figure #6

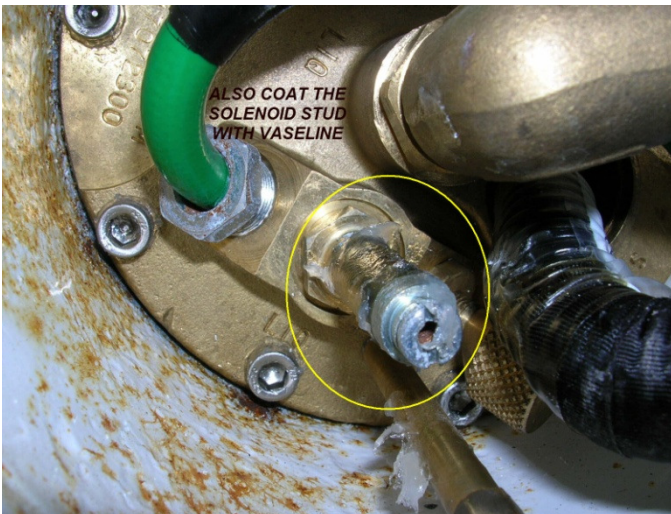


Figure #7



Figure #8



**Figure #9**



**Figure #10**



**Figure #11**



**Figure #12**



**FLUID FILM PART #AS-11**

**Contact Our Service Department with Any Questions**

**CHITTENANGO** – phone 800-962-5768 or  
 Daryl Wallace : [dwallace@newyorkbussales.com](mailto:dwallace@newyorkbussales.com)  
 Brian Lamaitis : [blamaitis@newyorkbussales.com](mailto:blamaitis@newyorkbussales.com)

**ROCHESTER** – phone 800-463-3232 or  
 Gary Chichester: [gchichester@newyorkbussales.com](mailto:gchichester@newyorkbussales.com)

**ALBANY** – phone 866-867-1100 or  
 Ben Reiling: [breiling@newyorkbussales.com](mailto:breiling@newyorkbussales.com)  
 Steve Searles: [ssearles@newyorkbussales.com](mailto:ssearles@newyorkbussales.com)

**WARRANTY** – 800-962-5768 ext.237  
 Morgan Jenkins: [mjenkins@newyorkbussales.com](mailto:mjenkins@newyorkbussales.com)