

# Tech Tip

FROM YOUR FRIENDS AT  
NEW YORK BUS SALES!



## Microbird G5 Entrance Door Adjustment

- Complaint –** There is a whistling coming from the entrance door or it is not closing properly or staying closed.
- Cause –** Door Adjustment
- Correction –** Microbird has just released an updated entrance door adjustment procedure which is attached.

*Contact Our Service Department With Any Questions*

**CHITTENANGO** – phone 800-962-5768 or

Daryl Wallace : [dwallace@newyorkbussales.com](mailto:dwallace@newyorkbussales.com)

Brian Lamaitis : [blamaitis@newyorkbussales.com](mailto:blamaitis@newyorkbussales.com)

**ROCHESTER** – phone 800-463-3232 or

Gary Chichester: [gchichester@newyorkbussales.com](mailto:gchichester@newyorkbussales.com)

**ALBANY** – phone 866-867-1100 or

Ben Reiling: [breiling@newyorkbussales.com](mailto:breiling@newyorkbussales.com)

**WARRANTY** – 800-962-5768 ext 237

Morgan Jenkins: [mjenkins@newyorkbussales.com](mailto:mjenkins@newyorkbussales.com)

*Or Your Customer Support Representative*

*West*

Michael Panzica – [mpanzica@newyorkbussales.com](mailto:mpanzica@newyorkbussales.com)

Cell 716-908-3186

*Central*

Jeremie “JJ” Richmond –

[jjrichmond@newyorkbussales.com](mailto:jjrichmond@newyorkbussales.com)

Cell 315-559-3999

*East*

Gary Bigness – [gbigness@newyorkbussales.com](mailto:gbigness@newyorkbussales.com)

Cell 845-500-3707



ALL of our Tech Tips can be found on the New York Bus Sales website at

<http://www.newyorkbussales.com/pages/bulletins.cfm>

Or at the New York Head Mechanic website at

<http://www.nyhma.org/viewforum.php?f=2&start=0>

## Micro Bird Inc

### SERVICE BULLETIN

**TITLE:** Passenger entrance door adjustment

**TO:** Micro Bird dealers

**PRODUCT:** Micro Bird buses

**FROM:** After Sales and Warranty department

## PLANNING

### Description

Vehicles manufactured between February 2015 and December 2015 may have issues with some passenger entrance doors not closing properly. The following adjustment procedure is valid for all Micro Bird buses even those which have been constructed outside this period.

### Compliance

The warranty claim must be placed with Micro Bird within 45 days from the date of repair.

### Manpower

Authorised labour: .75 hr for vehicles manufactured between February and December 2015 as the entrance door seals may need to be reversed. Labour will be of .50 hr for vehicles manufactured outside the above mentioned period.

***Note: It is recommended to read the entire procedure before performing repairs.***

***Note : It is assumed that all of the procedures required to embody this modification will be performed according to professionally accepted standards.***

## MATERIAL AVAILABILITY

### SHOP MATERIAL AND TOOLING

| Qty | Description                 |
|-----|-----------------------------|
| 1   | 9/16 wrench                 |
| 1   | Phillips screwdriver        |
| 1   | drill with a 5/16 drill bit |

## **PROCEDURE**

### **Step 1: Make sure the entrance door seals are installed correctly.**

If the bus was manufactured between February and December 2015, and you have reversed the seals for any reason, you will need to reinstall them to their original position see pictures below.



Large rubber seal on right door. Flat side out.

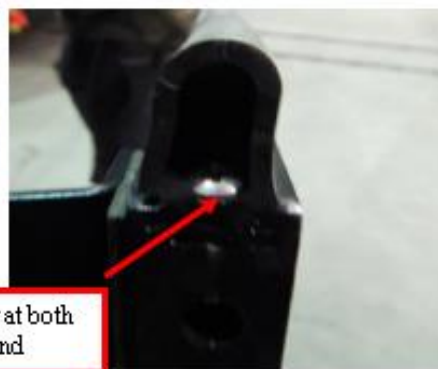
Small rubber on the left door.

### **Reverse seals if needed:**

- a) Remove the bottom metal brackets using a 5/16 bit



- b) Using a Phillips screwdriver, remove both screws (up and down) on the door frame, which are holding the seals in place.



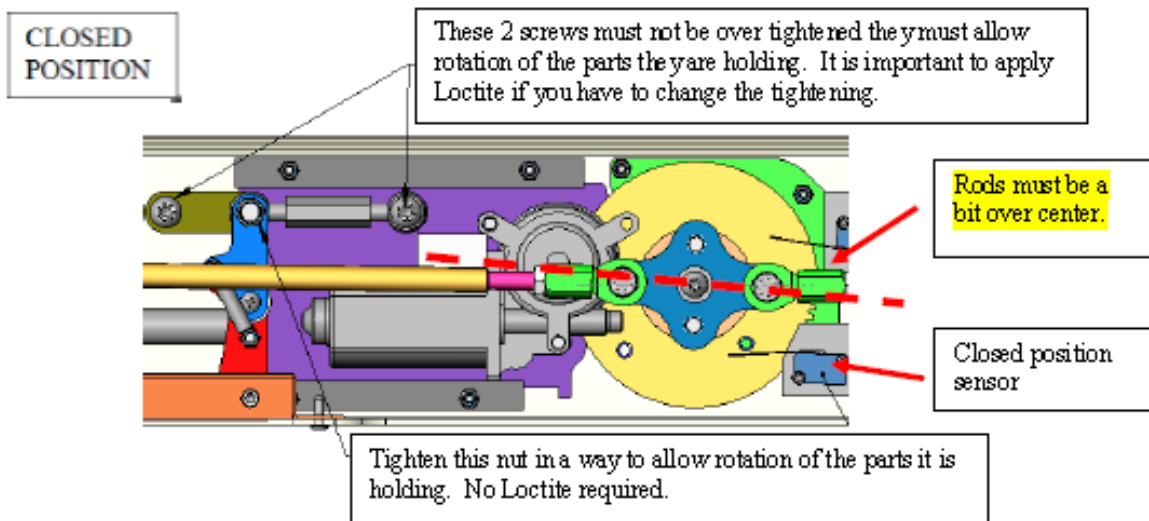
Screw at both end

- c) Reverse seals and reinstall hardware and metal brackets.

## Step 2: Door mechanism adjustment

1. Before you adjust the opening mechanism, check the emergency release handle first. This handle must operate easily. If the handle is hard to operate, the screws and nuts may have been over tightened. Check on the drawing below to know what should be done.

**IMPORTANT:** if you loosen one of the screws, you must remove it completely and apply Loctite 242 on it before you put it back in place (tighten and loosen one quarter turn to allow rotation of the parts).



2. Align the gear with the mechanism in closed position. Adjust the closed position sensor to stop the gear at the indicated position. Bend the sensor strip to adjust the sensor.

**IMPORTANT:** the two rods need to be adjusted a little bit over center to make sure the motor does a complete cycle and closes the doors tightly.

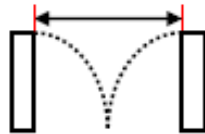
**\*\*\* At this moment, it is important to test the emergency handle to make sure it operates easily.**

3. Adjust the threaded rods to allow a perfect closing of the door leaves (in straight line & closing at same time). The rods have right hand & left hand threads, so simply turn to lengthen or shorten them. Check the door alignment on the picture below.

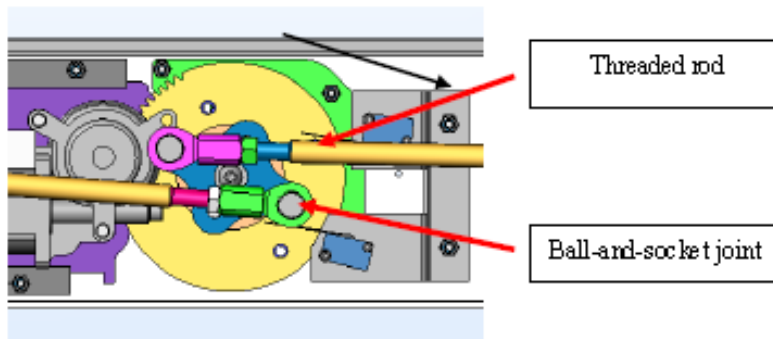


**After adjusting the rods, check the emergency handle to make sure it is still operating easily.**

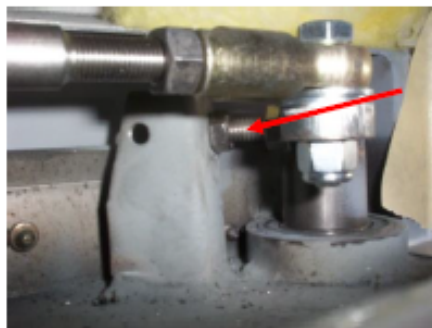
4. Check the opening of the leaves according to the size of the DOD installed: 24" or 32" minimum.



When the door is open, make sure the ball-and-socket joints & rods do not make contact



Adjust the stop bolt of mechanism with a  $\frac{1}{2}$ " wrench to keep the leaves open.



5. We suggest you use a fish scale to test the handle. Weight to release the emergency door handle should not be more than 10 pounds. The leaves must close with electric power. If they are not doing so, you will have to adjust properly (Refer to the beginning of step 2).



6. After you have adjusted & tested the door leaves operation, tighten the threaded rod nuts using a 9/16" wrench.



### **Inspection:**

Your electric powered double leaf entrance door requires periodic inspection. Each 3 to 6 months:

- Check the condition of main components: bearing, gears, ball-and-socket joints, motor and sensors.
- Check the adjustment of door leaves.
- Visually inspect that all the bolts are in place and correctly tightened.

Every day:

- Test the emergency release handle.