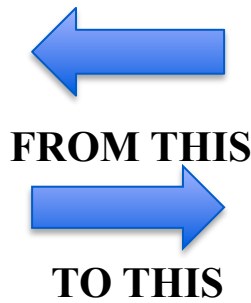




## Staubli Fuel Fill Install

#16-0706-PP



### CHANGING TO THE STAUBLI PROPANE FUEL FILL

Recently we released information on the new “Euro-Style” Staubli fuel fill receptacle (PARTS UPDATE #16-02PPREVB). We’ve had inquiries as to how complex the change was to make on units in service. The following are the steps required to install the new receptacle. The unit must be in a well ventilated area and ALL standard safety measures need to be followed. We found that changing the receptacle out is about an 1.5 hour job and requires no special tools. Below are the instructions to do the conversion.

\*This option is available on new units with option #4024610

ALL of our Service Updates can be found on the [New York Bus Sales website](#)  
Or at the [New York Head Mechanic website](#)

Step #1 – Located in the fuel fill door is a manual bleeder, which is fed by a line to the left rear of the fuel tank where a manual valve is located. Locate the valve and close – See Figure #1

Step #2 – Once the valve is closed, locate the bleeder valve behind the fuel fill door and remove the cap, venting the propane which is in the line (approx. 10 seconds) – See Figure #2

Step #3 – Under the body beneath the fuel door there is a cover plate between 2 floor crossmembers. Locate the plate and remove being careful as there are spacers above the plate which need to be reused – See Figure #3

Step #4 – Once the cover plate is removed exposing the rear of the fuel fill access, remove the line to the bleeder valve (#1) and crack the main fuel fill (#2) – AGAIN the fuel in the line will vent (approx. 10-15 seconds) and remove – See Figure #4

Step #5 – Unscrew the rubber cap from the door switch and remove the rubber piece exposing the mounting nut. Remove the nut and take the switch out from the backside – See Figure #5

Step #6 – Remove the 4 acorn nuts holding the plate to the body and remove the plate. PLEASE BE CAREFUL as there are actually 2 plates with “tabs” on the body to mount them and it may require one person to reach up from in underneath the unit and hold the back plate from falling. – See Figure #6 & #7

Step #7 – Assemble the new Staubli receptacle on the new plate provided and mount to the vehicle – See Figures #8, #9 & #10.

ALL of our Service Updates can be found on the [New York Bus Sales website](#)  
Or at the [New York Head Mechanic website](#)



Step #8 – Reinstall door switch and adjust.

Step #9 – Reinstall main fuel fill line and tighten.

Step #10 – Reinstall bleeder, connect line, tighten and open valve.

Step #11 – Using Snoop, test the bleeder and line for leaks.

Step #12 – Fill unit and using Snoop check main fill line fitting for leaks.

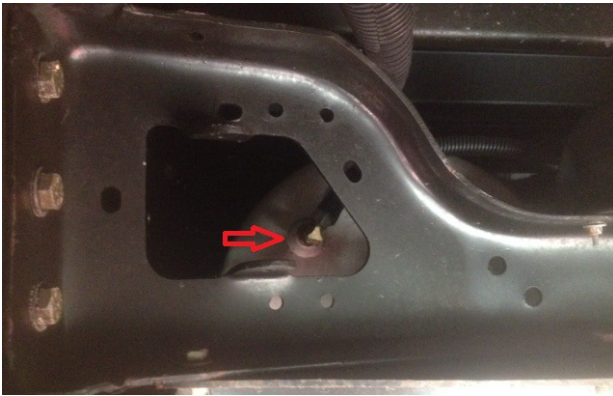


Figure #1



Figure #2

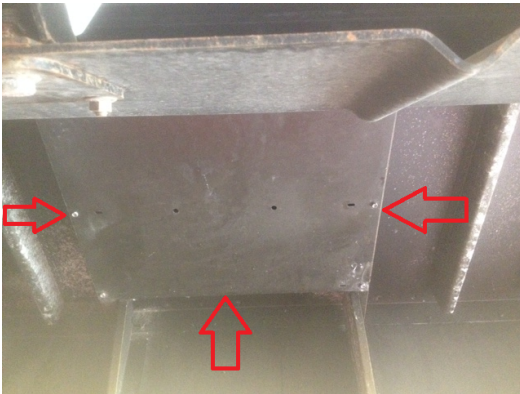


Figure #3

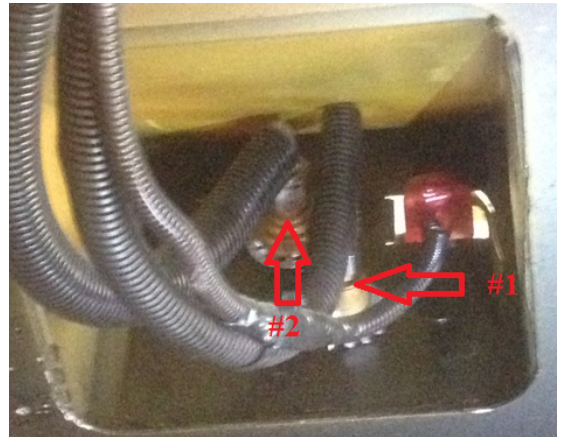


Figure #4

ALL of our Service Updates can be found on the [New York Bus Sales website](#)  
Or at the [New York Head Mechanic website](#).





Figure #5

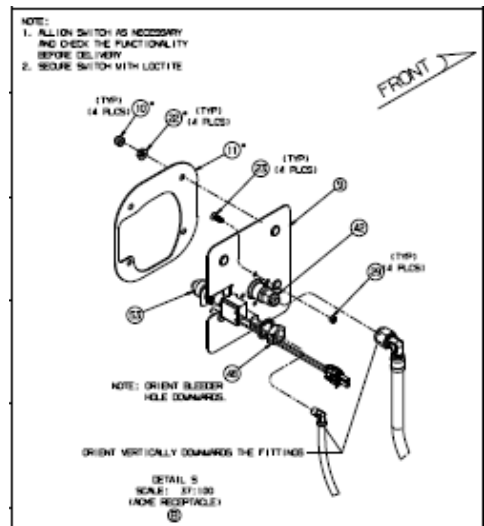


Figure #6

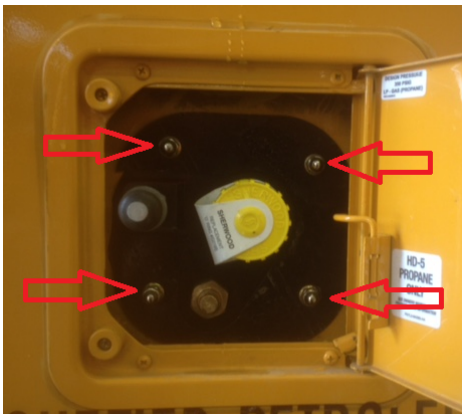


Figure #7



Figure #8

ALL of our Service Updates can be found on the [New York Bus Sales website](#)  
Or at the [New York Head Mechanic website](#)



Figure #9



Figure #10

ALL of our Service Updates can be found on the [New York Bus Sales website](#)  
Or at the [New York Head Mechanic website](#)





## CONTACT OUR SERVICE OR PARTS DEPARTMENT WITH ANY QUESTIONS

### SERVICE

**Chittenango:** 800-962-5768  
Daryl Wallace or Brian Lamaitis

**Rochester:** 800-463-3232  
Dave Schaub

**Albany:** 866-867-1100  
Ben Reiling

**Warranty:** 800-962-5768  
Morgan Jenkins

### Customer Service Representatives

**Eastern Region:**  
Gary Bigness  
845-500-3707

**Central Region:**  
JJ Richmond  
315-559-3999

**Western Region:**  
Mike Panzica  
716-908-3186

### PARTS

**Director of Parts**  
Jim Hogan  
jhogan@newyorkbussales.com  
607-227-5794

**Chittenango:** 800-962-5768  
Gari McQuade  
gmcquade@newyorkbussales.com  
Bill Cox  
bcox@newyorkbussales.com  
John Lewin  
jlewin@newyorkbussales.com  
Dave Grant  
dgrant@newyorkbussales.com

**Albany:** 866-867-1100  
Sean Conway  
sconway@newyorkbussales.com  
John Green  
jgreen@newyorkbussales.com

**Rochester:** 800-463-3232  
Dave Cook  
dcook@newyorkbussales.com  
Steve Hibbard  
shibbard@newyorkbussales.com

ALL of our Service Updates can be found on the [New York Bus Sales website](#)  
Or at the [New York Head Mechanic website](#).

