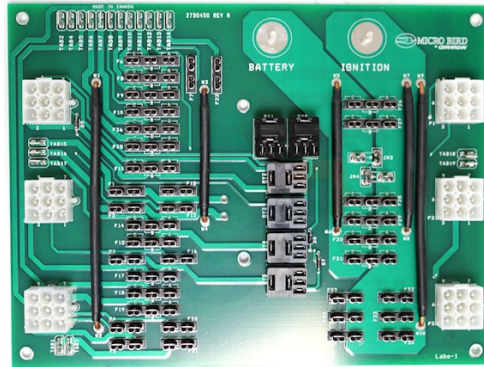




MicroBird Printed Circuit Board Replacement

Tech Tip #17-0418



Replacing Printed Circuit Boards

Attached please find information from MicroBird on replacing the printed circuit boards on their product!

ALL of our Service Updates can be found on the [New York Bus Sales website](#)
Or at the [New York Head Mechanic website](#)

PRINTED CIRCUIT BOARD REPLACEMENT PROCEDURES

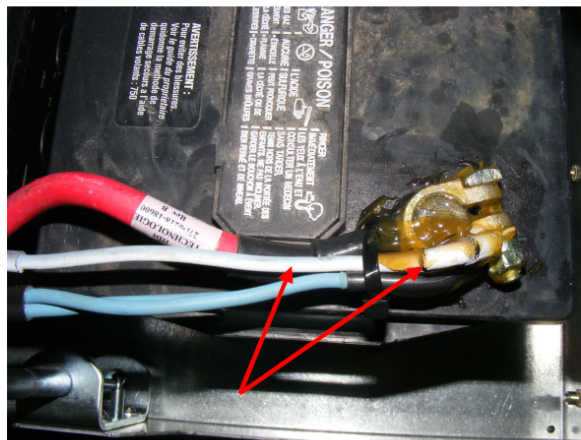
| Part needed | Description | Quantity |
|-------------|--------------------------|---------------|
| 27D0450 | Printed Circuit Board | 1 |
| 27E0006 | Plastic spacers | 6 |
| 27D0499 | Harness for Strobe light | If applicable |
| 27D0498 | Harness for Crossing arm | If applicable |

ATTENTION :

- If the vehicle is equipped with a strobe light powered by the ignition or the 8 way warning lights (option LI1-1 or LI1-2), harness #27D0499 will need to be added.
- If the vehicle is equipped with a crossing arm activated by a switch in the console (option ISC), harness #27D0498 will need to be added.
- If the vehicle has a strobe light, or a crossing arm which are NOT powered as described above, or is not equipped with these accessories, NO additional harness is required. Proceed with steps 1 to 3.

1- Preparation

- Disconnect the power cable of the printed circuit board directly from the battery.

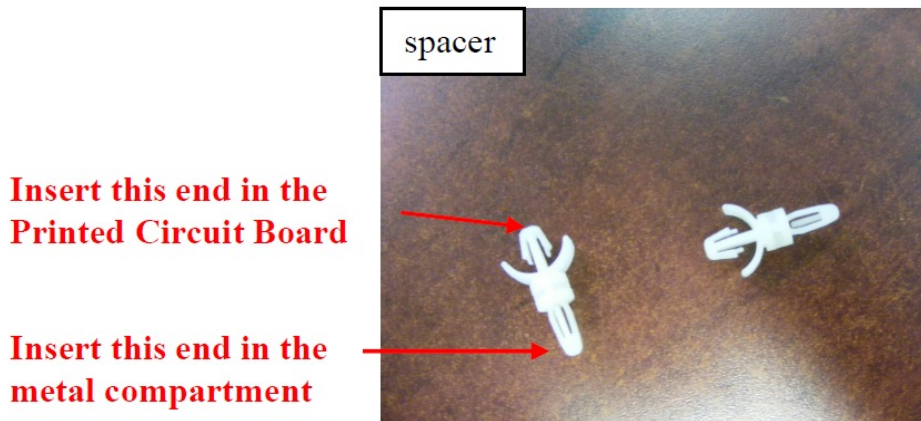


ALL of our Service Updates can be found on the [New York Bus Sales website](#)
Or at the [New York Head Mechanic website](#)

- Make sure there is no current at the studs on the printed circuit board with a test light.
- Disconnect each wire and connector from the PCB. Make sure to identify each piece with their original position before removal.

2- Transferring all components to new PCB

- Remove the PCB from the electrical compartment.
- Transfer each component from the old PCB to the new one, installing them in their original position.
- If necessary, replace the plastic spacers and make sure to position them correctly to avoid all contact between the printed circuit board and the metal compartment



3- Installation

First step : (see Figure 1)

- Remove the **yellow wire # 73** installed at position **1** of **J1** connector.
- Replace the round metallic terminal with a female terminal type “TAB”.
- Repeat both steps with each following wires :
 - **Gray 238** at position **2** of **J1** connector
 - **Orange 214** at position **3** of **J1** connector
 - **Brown 113** at position **7** of **P2** connector
 - **Brown 35** at position **8** of **P1**. connector

ALL of our Service Updates can be found on the [New York Bus Sales website](#)
Or at the [New York Head Mechanic website](#)

Second step : (see Figure 2)

Install these 5 wires at their new position.

- **Gray 238** needs to be in **TAB-16**
- **Orange 214** needs to be in **TAB-17**
- **Brown113** needs to be in **TAB-19**
- **Brown 35** needs to be in **TAB-18**
- **Yellow 73** needs to be in **TAB-15**

All other wires and connectors must be installed in their original location on the Printed Circuit Board.

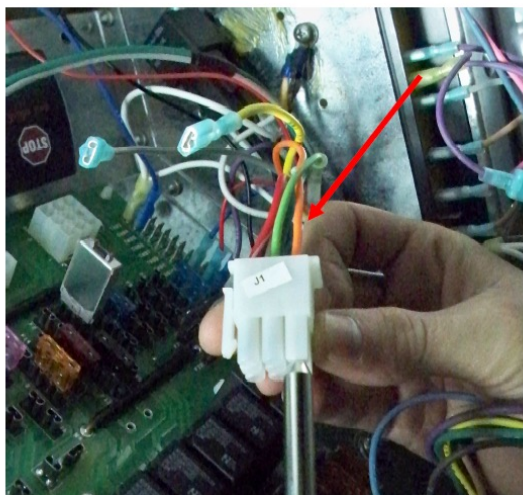


Figure 1



Figure 2

If the vehicle is equipped with a strobe light on roof or a crossing arm please refer to the following instructions.

**** For strobe lights:** Refer to wiring diagram EL0224A to evaluate the type of activation of the option and, if needed, use harness # 27D0499.

**** For crossing arms:** Refer to wiring diagram EL0225A to evaluate the type of activation of the option and, if needed, use harness # 27D0498.

To add an additional harness, proceed as mentioned below :

Disconnect all wires and connect them to the ends of each harness wire as shown in figure 3. Fix relay and ground wire with a self drilling screw in the metal compartment.

ALL of our Service Updates can be found on the [New York Bus Sales website](#)
Or at the [New York Head Mechanic website](#)

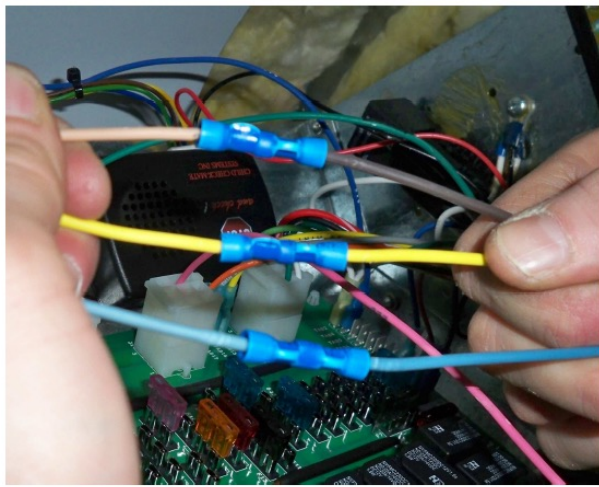


Figure 3

Enclosure : wiring diagrams EL0224A and EL0225A.

2011-04-04

ALL of our Service Updates can be found on the [New York Bus Sales website](#)
Or at the [New York Head Mechanic website](#)



CONTACT OUR SERVICE OR PARTS DEPARTMENT WITH ANY QUESTIONS

SERVICE

Chittenango: 800-962-5768
Daryl Wallace or Brian Lamaitis

Rochester: 800-463-3232
Dave Schaub

Albany: 866-867-1100
Ben Reiling

Warranty: 800-962-5768
Morgan Jenkins

**Customer Service
Representatives**

Eastern Region:
Gary Bigness
845-500-3707

Central Region:
JJ Richmond
315-559-3999

Western Region:
Mike Panzica
716-908-3186

PARTS

Director of Parts
Jim Hogan
jhogan@newyorkbussales.com
607-227-5794

Chittenango: 800-962-5768
Gari McQuade
gmcquade@newyorkbussales.com
Bill Cox
bcox@newyorkbussales.com
John Lewin
jlewin@newyorkbussales.com
Dave Grant
dgrant@newyorkbussales.com

Albany: 866-867-1100
Sean Conway
sconway@newyorkbussales.com
Pat Murphy
pmurphy@newyorkbussales.com

Rochester: 800-463-3232
Dave Cook
dcook@newyorkbussales.com
Steve Hibbard
shibbard@newyorkbussales.com

ALL of our Service Updates can be found on the [New York Bus Sales website](#)
Or at the [New York Head Mechanic website](#)

