



New “NextGen” Seat Securement SERVICE NOTICE #17-0831REVA



2” Seat Washers NOT Required

As we explained in Sales Update #17-05, Blue Bird and Micro Bird are releasing a new seat referred to as the “NextGen” Convertible Seat. With the new design, the seat installation to the floor has changed.

The previous Blue Bird seats on the Vision and All American used 3/8” diameter bolts through the floor and required a 14 gauge X 2” washer on ALL the bolts.

On Blue Bird buses, the new seats have a stamped leg with 1/2” diameter Grade 8 flange bolts. The nuts are also flanged. The front bolt no longer requires an underfloor washer (Item #3 in Figure 1). The 2 rear bolts which are reinforced with a 0.180 thick flat plate under the floor.

ALL of our Service Updates can be found on the [New York Bus Sales website](#)
Or at the [New York Head Mechanic website](#)

The new installation, which complies with FMVSS 210, was presented to NYSDOT and Rusty Seastrum responded that “Whereas the Federal Motor Vehicle Safety Standards current seating securement performance standards were upgraded subsequent to the effective date of 720.4 (P)(2)(c), and thereby mandating a stronger seat attachment, and the washer requirement is inferior to current designs of seating securements, the washers are therefore not required.”

**BLUE BIRD PART NO.
#3 – 10054386**

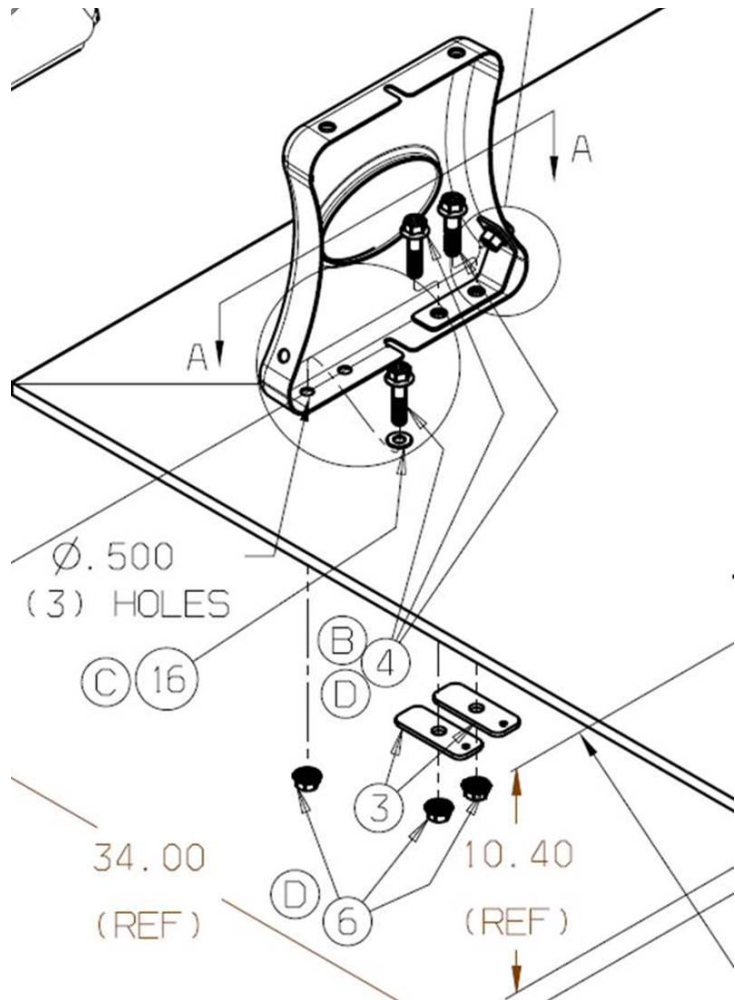


FIGURE 1

ALL of our Service Updates can be found on the [New York Bus Sales website](#)
Or at the [New York Head Mechanic website](#)



UPDATE SEPTEMBER 13, 2017

Figure 1 illustrates the “Gusset Mount-Floor Mount” seat which is the most common installation. This seat has one leg to the floor, and the opposite end is attached to the seat rail of the body.

Blue Bird Engineering has pointed out that the mounting of seats with two legs such as those located at the Side Emergency Door is slightly different. (Figure 2). Both legs will have an added bracket (#1) that connects to the leg and the floor, and three “channel” washers (#3) per leg which is 4” in length and 1-1/2” wide instead of the two flat plates.

BLUE BIRD PART NO's

#1 – 10056763

#3 – 10050445

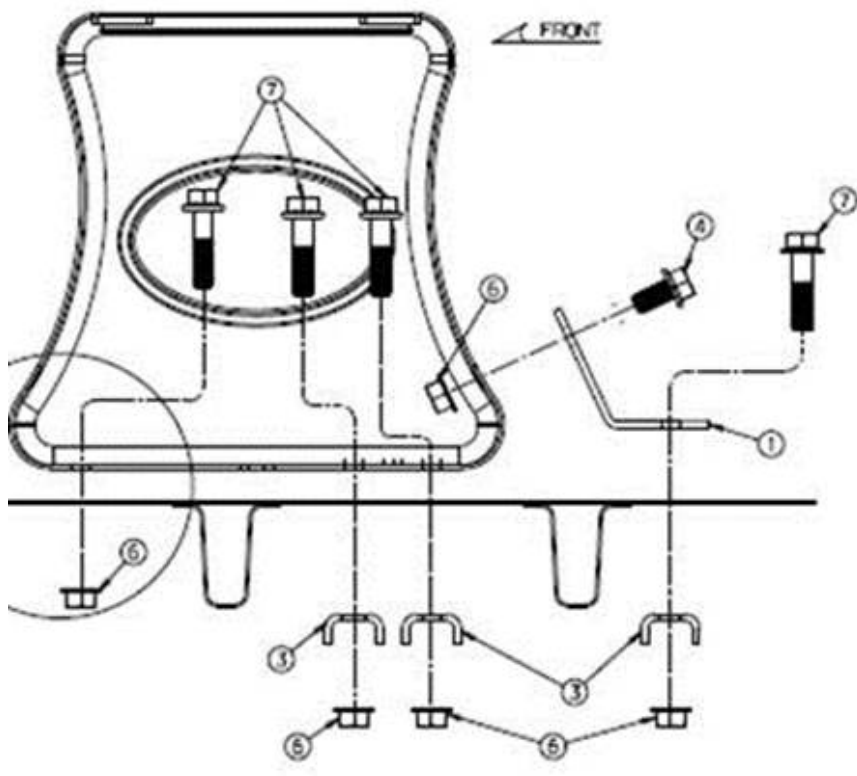


FIGURE 2

ALL of our Service Updates can be found on the [New York Bus Sales website](#)
Or at the [New York Head Mechanic website](#)

CONTACT OUR SERVICE OR PARTS DEPARTMENT WITH ANY QUESTIONS

SERVICE

Chittenango: 800-962-5768
Daryl Wallace or Brian Lamaitis

Rochester: 800-463-3232
Dave Schaub

Albany: 866-867-1100
Ben Reiling

Warranty: 800-962-5768
Morgan Jenkins

**Customer Service
Representatives**

Eastern Region:
Gary Bigness
845-500-3707

Central Region:
JJ Richmond
315-559-3999

Western Region:
Mike Panzica
716-908-3186

PARTS

Director of Parts
Jim Hogan
jhogan@newyorkbussales.com
607-227-5794

Chittenango: 800-962-5768
Gari McQuade
gmcquade@newyorkbussales.com
Bill Cox
bcox@newyorkbussales.com
John Lewin
jlewin@newyorkbussales.com
Dave Grant
dgrant@newyorkbussales.com

Albany: 866-867-1100
Sean Conway
sconway@newyorkbussales.com
Pat Murphy
pmurphy@newyorkbussales.com

Rochester: 800-463-3232
Dave Cook
dcook@newyorkbussales.com
Steve Hibbard
shibbard@newyorkbussales.com

ALL of our Service Updates can be found on the [New York Bus Sales website](#)
Or at the [New York Head Mechanic website](#)

