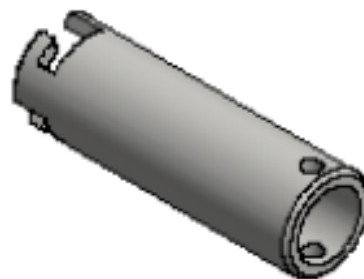




New “NextGen” Seat Flip Operation

SERVICE NOTICE #17-1011



All “Flip” Seats Other Than SED Seat Require Tool

As we explained in Sales Update #17-05, Blue Bird and Micro Bird are releasing a new seat referred to as the “NextGen” Convertible Seat. The newly designed seat “cushion” can be flipped up using a tool to release. This provides a more open area when cleaning units, especially with the previous leg which was the center of every seat. Units with Side Emergency Doors will still have the flip seat with the shock. This pushes the seat cushion up when no one is seated to give a clear aisle to the door. ALL other seats will have the ability to have the seat cushion flip up with the use of a tool (BB Part #10057143). Attached is a Technical Publication from Blue Bird on the operation of the flip feature along with Service Information on seat back and seat cushion removal.

Each unit will be delivered with a tool on the key ring as shown in FIGURE #1. Additional tools may be purchased through our Parts Department.

ALL of our Service Updates can be found on the [New York Bus Sales website](#)
Or at the [New York Head Mechanic website](#)

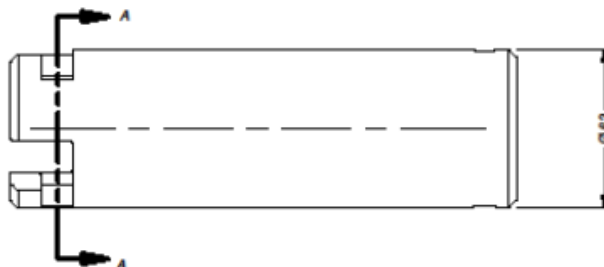
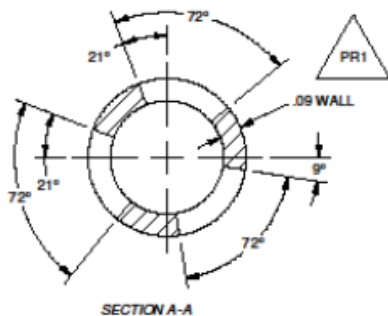
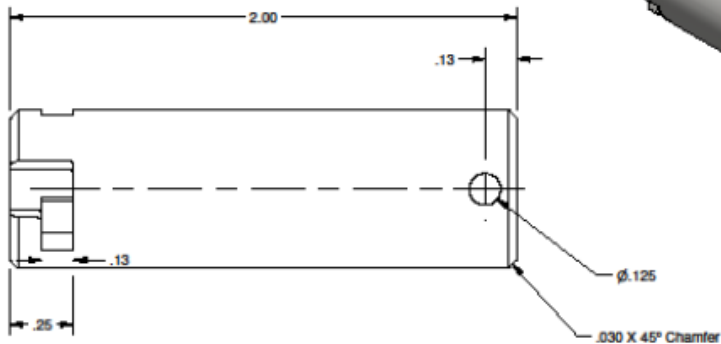
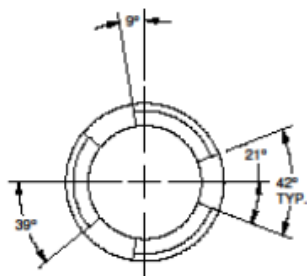
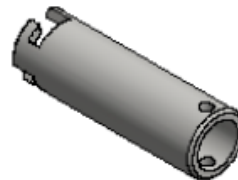


FIGURE 1

ALL of our Service Updates can be found on the [New York Bus Sales website](#)
Or at the [New York Head Mechanic website](#)

NOTES:

1. ELECTRIC PLATE GLOSS BLACK
2. PLATING MIL THICKNESS - 1.0 - 2.0



---REVISION HISTORY---

REV.	Date:	Description:	From:	CMB
PR	6/1/2017	Preliminary Release for quoting, prototyping, and/or design review	JAK	
PR1	6/14/2017	MADE PART FROM TUBING INSTEAD OF ROUND STOCK	JAK	

MATERIAL INFORMATION:
Technology Category: Fabricated Metal
Raw Material: ASTM A1011 CS TYPE B, HRPSO
Material Thickness: .625 DIA. X .090 WALL
Finish Requirements:
Color Match Code:
Common Bend Radius:
Material Tolerances: $\pm .005$ Hole Pos: $\pm .0015$ - Hole D: $\pm .0010$ Bend Angle: $\pm 1.5^\circ$

Part Number: 600-640	Rev.: PR1	Scale: A	Page Size: A	Page: 1 of 1
Description: KEY, NEXTGEN LATCHING PLUNGER				
Drawn By: jakirahman	Creation Date: 6/1/2017	Operator Note:		
2001 Northard Drive Elkhart, IN, 46514 Phone: 574-262-2399, Fax: 574-262-0854 www.hsmi.com				
HSMI				
<small>THIS DRAWING AND THE CONTENTS ARE THE PROPERTY OF THE HSM SOLUTIONS COMPANY. ANY USE OR COPY OF THE DATA CONTAINED ON THIS DRAWING, PHYSICAL OR ELECTRONIC, WITHOUT THE EXPRESS WRITTEN PERMISSION FROM THE HSM SOLUTIONS CO. IS PROHIBITED.</small>				



PART #600-640

ALL of our Service Updates can be found on the [New York Bus Sales website](#)
Or at the [New York Head Mechanic website](#)



CONTACT OUR SERVICE OR PARTS DEPARTMENT WITH ANY QUESTIONS

SERVICE

Chittenango: 800-962-5768
Daryl Wallace or Brian Lamaitis

Rochester: 800-463-3232
Dave Schaub

Albany: 866-867-1100
Ben Reiling

Warranty: 800-962-5768
Morgan Jenkins

**Customer Service
Representatives**

Eastern Region:
Gary Bigness
845-500-3707

Central Region:
JJ Richmond
315-559-3999

Western Region:
Mike Panzica
716-908-3186

PARTS

Director of Parts
Jim Hogan
jhogan@newyorkbussales.com
607-227-5794

Chittenango: 800-962-5768
Gari McQuade
gmcquade@newyorkbussales.com
Bill Cox
bcox@newyorkbussales.com
John Lewin
jlewin@newyorkbussales.com
Dave Grant
dgrant@newyorkbussales.com

Albany: 866-867-1100
Sean Conway
sconway@newyorkbussales.com
Pat Murphy
pmurphy@newyorkbussales.com

Rochester: 800-463-3232
Dave Cook
dcook@newyorkbussales.com
Steve Hibbard
shibbard@newyorkbussales.com

ALL of our Service Updates can be found on the [New York Bus Sales website](#)
Or at the [New York Head Mechanic website](#)





BLUE BIRD®

TECHNICAL PUBLICATIONS EXTRACT

NextGen[®]

Passenger Seats



© 2017 Blue Bird Corporation. All rights reserved.

DRIVER ORIENTATION

Blue Bird NextGen Passenger Seats

Your bus may be equipped with Blue Bird NextGen Convertible Seats, manufactured exclusively for Blue Bird. NextGen Seats take up less space and have fewer parts, yet provide enhanced features for Passengers, Drivers, and bus fleet Technicians.

For your passengers, comfort is enhanced by inclusion of an integrated headrest, a contoured seat back for increased knee clearance, and a lumbar support molded into the back panel.

For the bus Driver, NextGen Seats provide easier access for inspection, cleaning, and closing windows at the end of the route day.

For your service Technicians, NextGen seats facilitate easy configuration of the buses in your fleet to any combination of seats equipped with lap belts, 3-point belts, or 3 point belts with child restraints without unbolting the floor or wall mounts.

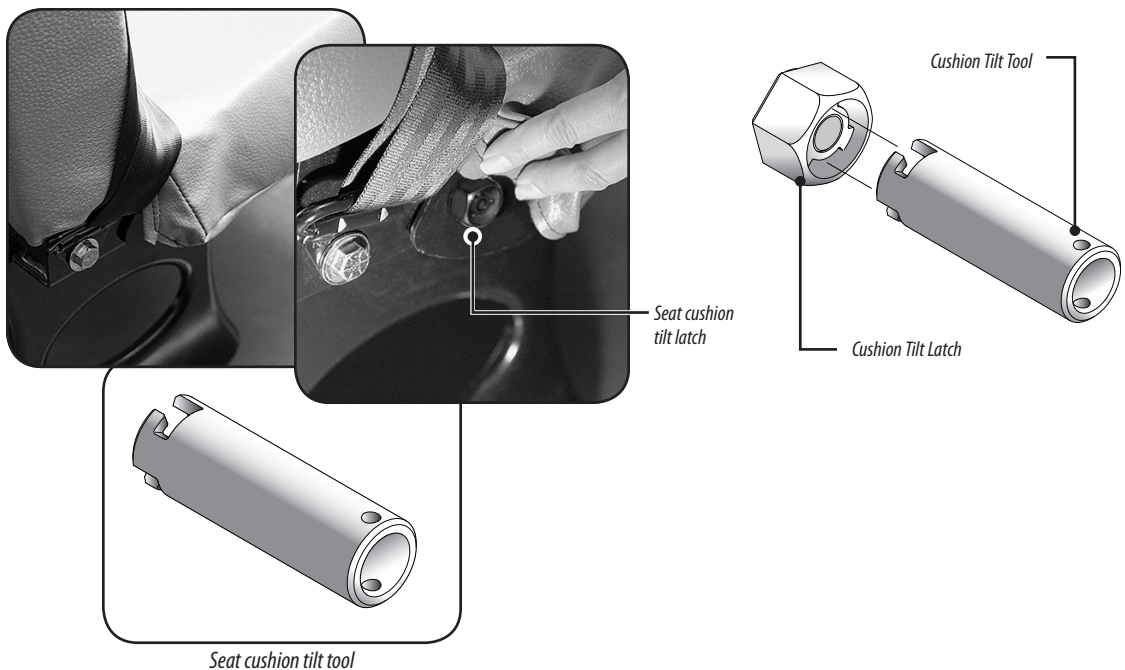


NextGen Seats

Cushion Tilt Feature

The bottom Cushion Assembly of each NextGen Convertible Seat is pivot mounted to the Back Assembly so that it can be tilted and latched in a vertical position by the Driver, to facilitate under-seat inspection, floor sweeping, or more convenient window access. The tamper-resistant tilt latch is mounted to the Cushion Assembly's frame just beneath the aisle-side rear corner of the cushion's cover, and is operated by the Driver using a provided special tool.

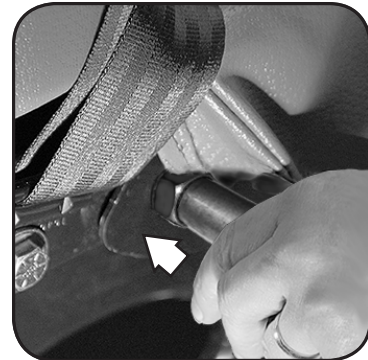
1. Uncover the cushion tilt latch located just under the cushion's cover fabric at the rear aisle-side corner of the Cushion Assembly.



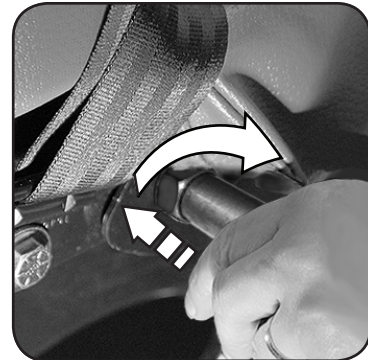
2. At the center of the tilt latch is a spring loaded pin which engages the cushion assembly's frame to latch the cushion in either the horizontal or vertical position. Insert the tool into the socket of the latch and while pushing in, turn the tool clockwise until it drops and locks behind the ears on the plunger.
3. Grasping the tool, pull outward against its spring-loaded pressure, toward the center of the aisle.
4. While applying outward pressure, begin to lift the front of the cushion assembly. It is not necessary to continue holding the tool outward throughout the cushion's movement. Tool can remain in tilt latch after you release your grip.
5. Continue lifting the front edge of the cushion assembly until it latches in an almost vertical position.

To lower the cushion assembly back to its normal use position, pull tool outward toward aisle to release the latch, and gently lower the cushion ensuring it latches into its normal position. To remove tool from latch: push tool inward while rotating counter-clockwise until it releases from plunger, then pull tool out of tilt latch socket.

⚠ WARNING! *Seat cushions must be latched in the horizontal seated position whenever the bus is in operation. Proper inspection and maintenance must be routinely performed to ensure safe use and operation of passenger seats and restraints. Follow the Seat Belt Inspection And Maintenance and the Seat Inspection And Maintenance sections provided in the Driver Handbook provided with your bus.*



Insert the tool into the latch socket. . .



. . . push in and turn clockwise until it locks. . .



. . . pulling outward, lift the front of the cushion slightly.



. . . continue to raise the cushion until it snaps into the upright position.

Seat Assembly Removal and Cushion Disassembly

Technician instructions for removing NextGen Seat assemblies from the bus, and for disassembling the Cushion Assembly from the Back Assembly in order to convert the seats to alternate belt types, are provided in 2019 and later Service Manuals.

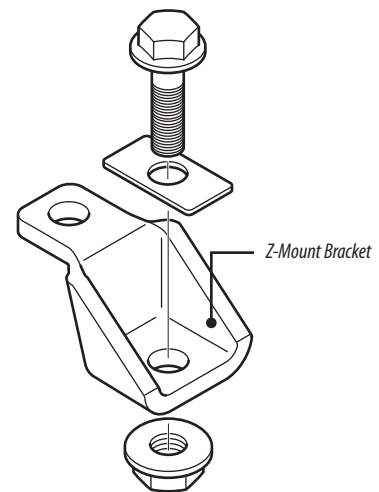
Back and Cushion Assembly Removal

The design of NextGen Seats provides for easy removal of complete Back and Cushion Assemblies in order to relocate them or convert them between seats equipped with lap belts only and three-point belts.

On all four NextGen Seat types (seat belt ready seats, lap belt seats, 3-point belt seats, or child restraints), the entire seat back and cushion assembly is secured to its floor and wall mounted supports by four easily-accessible bolts, allowing it to be removed and remounted as a unit, without unbolting the floor- or wall-mounted supports:



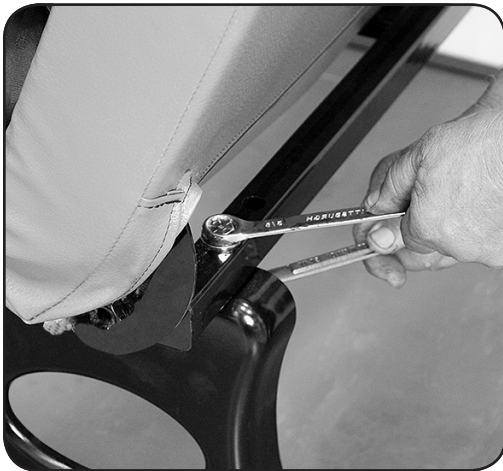
1. Using the procedure detailed under **Cushion Tilt Feature** above, tilt the cushion assembly and latch it into its upright position, to provide access to the two front mounting bolts.



2. At the wall-side rear corner of the seat, remove the 1/2" hex flange bolt, rectangular washer, and flange nut securing the Z-mount bracket to the wall-mounted bracket.



3. At the wall-side front corner of the seat, remove the 1/2" hex bolt, rectangular washer (10055189), and flange nut securing the front of the seat back assembly's frame to the wall-mounted bracket.



4. Remove the two 7/16" hex flange bolts, washers, and hex nuts which attach the frame of the seat back assembly to the aisle-side pedestal.

The entire back and cushion assembly can now be lifted as a unit and moved for mounting at another location, or removed from the bus and taken to a workbench if the cushion assembly is to be removed and fitted to a different back assembly.



Cushion Assembly Removal

The same Cushion Assembly is used on NextGen Seats equipped with lap belts only and those equipped with three-point belts. With the complete Back and Cushion Assembly removed from the bus, the Cushion Assembly of either of those two seat types can be removed in order to be reused in combination with the other back assembly type.

Note: NextGen child-restraint seats are equipped with a unique Cushion Assembly which is not interchangeable with the other seat types.

To remove a Cushion Assembly:

1. With the complete Back and Cushion Assembly removed from the bus, at either end of the Back Assembly carefully push back the bottom of the back's cover fabric to reveal the clevis pin joint which serves as a hinge for the Cushion Assembly.
2. Using pliers or a screw driver, remove the E-ring clip from the clevis pin.
3. Push or lightly tap the clevis pin inward and remove it from the Back Assembly side of the joint. Retain the clevis pin and E-ring clip for reuse.



4. With the disconnected end of the cushion supported, repeat steps 1–3 at the opposite end of the seat. The Cushion Assembly can now be removed from the Back Assembly.



The removed Cushion Assembly



*The Back Assembly
with Cushion Assembly removed*



5. Before mounting the Cushion Assembly to another Back Assembly, inspect the condition of the Cushion Assembly for fabric tears or frame or weld cracks. Inspect clevis pins and E-ring clips for damage or wear. If damaged, use new replacements.
6. After reattaching the Cushion Assembly to another Back Assembly, tilt the Cushion Assembly and latch it in its raised position to ease handling when installing the seat in the bus.



If the Back and Cushion Assembly is to be moved to a position on the opposite side of the aisle, the Z-mount bracket originally bolted to the rear wall-mounted corner of the assembly and the cushion tilt latch must be moved to the opposite end:

1. Remove the 1/2" hex bolt, washer, and flange nut which fasten the Z-mount bracket to the frame of the Back Assembly.
2. Fasten the Z-mount bracket to the corresponding holes in the opposite end of the Back Assembly frame using the same fasteners. Torque the nut to 65–75 lb ft.
3. Using a 3/4" wrench or socket, and with no load pressure on the seat cushion, remove the cushion latch assembly and reinstall it in the corresponding threaded hole at the opposite end of the cushion frame.

Back and Cushion Assembly Installation

To install a complete Back and Cushion Assembly:

1. Verify that the Z-mount bracket is installed on the wall-end of the seat assembly and the cushion tilt latch assembly is installed on the aisle-end of the seat assembly.
2. Position the complete Back and Cushion Assembly on the floor-mounted pedestal and the wall-mounted support.
3. Install bolts, washers and nuts in their original positions and finger tighten.
4. Torque the 7/16" nuts which attach the seat assembly to the aisle-end floor-mounted pedestal to 45–55 lb ft.
5. Torque the 1/2" nuts which attach the seat assembly to the wall-mounted supports to 65–75 lb ft.
6. Lower the seat cushion to the seated position and verify it latches in the down position.

This Extract's content is applicable to units:
Built after August 1, 2017 (body numbers F485433 and beyond)
© 2017 Blue Bird Corporation. All rights reserved.