



SERVICE UPDATE – SOUNDOFF AUXILIARY WARNING LIGHT BBCV INSTRUCTIONS TECH TIP #17-1102



DOT is Specific on Light Operation

Below are instructions on the installation of the SoundOff auxiliary warning light on the Blue Bird BBCV (Vision).

Please take note that NYSDOT has specific requirements on placement and operation of these lights, which is included.

To align properly on the front, we have come up with brackets (FIGURE #1) to mount the lights in the lower corners of the grille (FIGURE #2).

These are available through our Parts Department.

FRONT LIGHT MOUNTING BRACKET - Part #NYB-076 - \$10.00/Pr

ALL of our Service Updates can be found on the [New York Bus Sales website](#)
Or at the [New York Head Mechanic website](#)

Front Lights –

#1 – Using screws provided, mount the lights to the brackets. Using #8 X 3/4”, mount the lights in both lower corners of the grille. Drilling 1/8” pilot holes will allow for a better install (See FIGURES #1, #2 & #3).

#2 – Route wire harness to the driver side frame rail to where the airlines run up to the treadle valve (See FIGURE #4 & #5).

PLEASE NOTE – Make sure that the harness is well secured with “ZIP” ties

#3 – Drill hole sufficient for harness (rubber grommet is preferred) to the right lower corner of where the air lines run (See FIGURE #6).

#4 – Put harness through hole, route behind the radio panel and into the electrical panel. Run along the bottom of the panel to the rear where the white “molex” plugs are located.

#5 – Locate plug #P7, in that plug are yellow wire #2414A and black wire #2112A. Use these wires for your light power. (See FIGURE #7).

#6 – Use the ground strip at the bottom right corner of the electrical panel for your ground. (See FIGURE #8).

Rear Lights –

#1 – Remove rear wire molding on driver’s side (See FIGURE#9).

#2 – Locate black wire #2412A and yellow wire #2414A and tie in power wire for rear lights (See FIGURE #10).

#3 – Drill hole in bow, clean off paint for a good ground and screw ground wires to bow, (See FIGURE #10).

#4 – Drill holes in corner of bulkhead supports (See FIGURES #11 & #12), run harness back to holes.

#5 – Remove reverse and tail lights.

#6 – Run wires through hole in bulkhead, down to the reverse lights and over to tail lights (See Figure #1).

#7 – Mark holes for mounting lights, predrill holes and run lights from tail light holes to light holes.

#8 – Connect wires to lights, mount lights and test (See FIGURE #14).

ALL of our Service Updates can be found on the [New York Bus Sales website](#)
Or at the [New York Head Mechanic website](#)





FIGURE #1



FIGURE #2



FIGURE #3

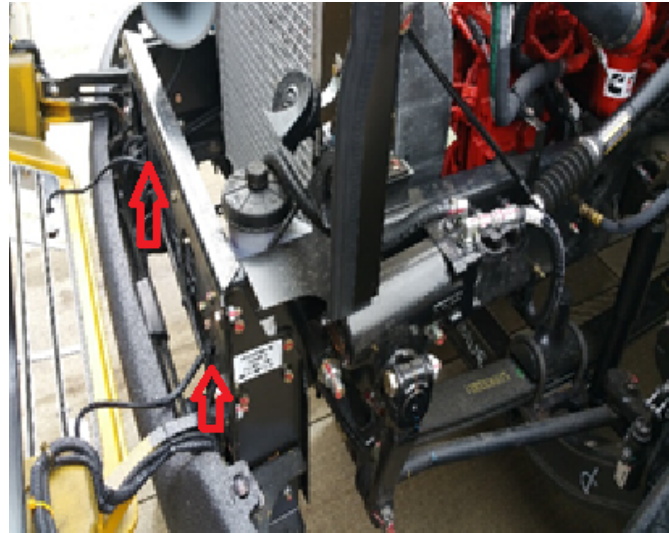


FIGURE #4

ALL of our Service Updates can be found on the [New York Bus Sales website](#)
Or at the [New York Head Mechanic website](#)



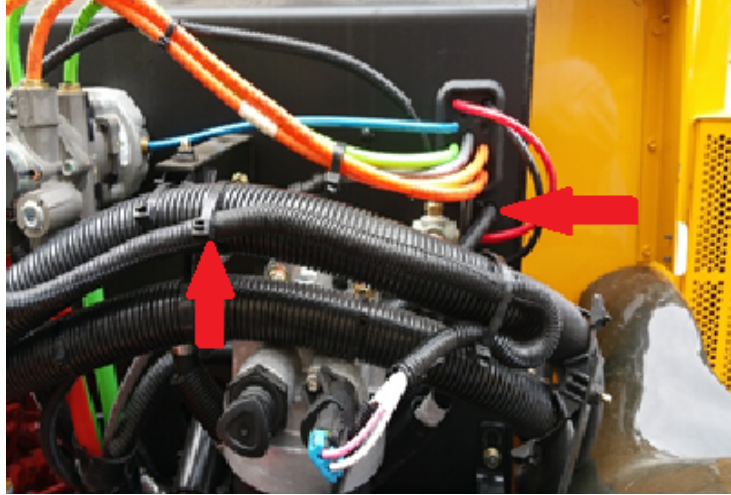


FIGURE #5



FIGURE #6



FIGURE #7

ALL of our Service Updates can be found on the [New York Bus Sales website](#)
Or at the [New York Head Mechanic website](#)

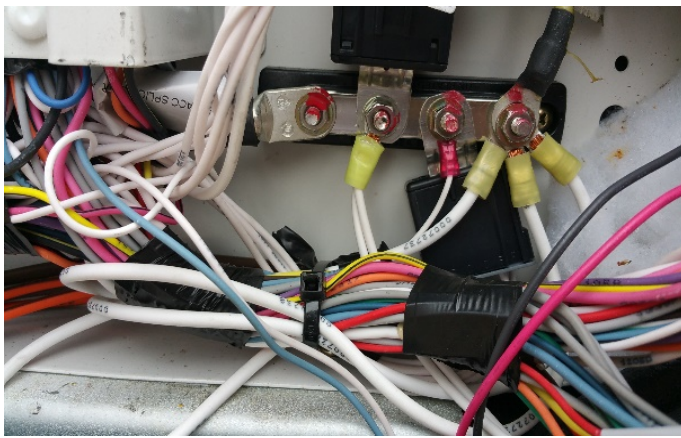


FIGURE #8



FIGURE #9

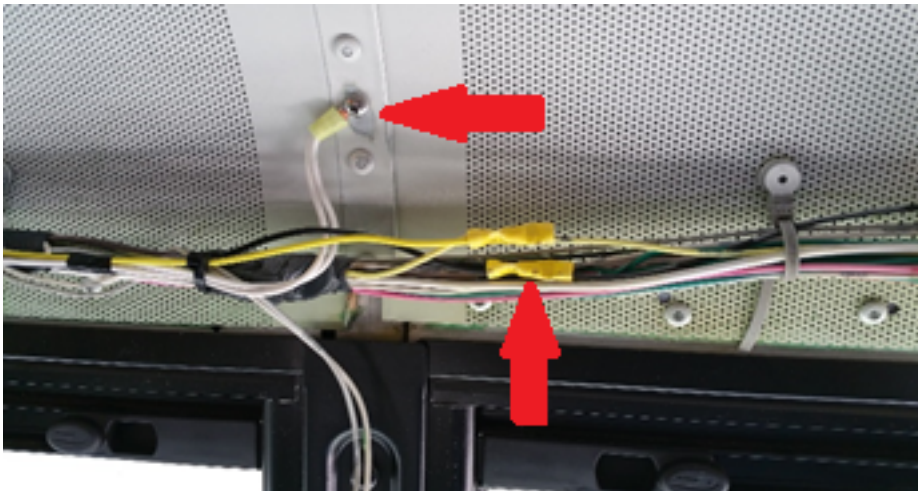


FIGURE #10

ALL of our Service Updates can be found on the [New York Bus Sales website](#)
Or at the [New York Head Mechanic website](#)



FIGURE #11



FIGURE #12



FIGURE #13



FIGURE #14

ALL of our Service Updates can be found on the [New York Bus Sales website](#)
Or at the [New York Head Mechanic website](#)





October 24, 2017

Clarke Reberg
Business Development Director
SoundOff CVP
3630 Highland Dr.
Hudsonville, MI 49426

Re: School Bus Auxiliary Crossing Lamps

Dear Mr. Reberg:

This is reference to the request for approval of the SoundOff lamp model CVAUXLK80(XX), to be used as auxiliary warning lamps on school buses in New York State. After review of the documents and information provided it is the opinion of this office that these lamps may be installed on school buses in New York State with the following requirements;

1. The lamps must be of a light emitting diode or equivalent type and not incandescent type,
2. The lamps must be either approximately 2" X 6" in size or the standard crossing lamp meeting SAE J887,
3. The lamps may only be red in color,
4. The lamps may only have a flashing type function and not be wired so as to have a strobe type function such as is allowed for the high mounted lamps,
5. The lamps must flash simultaneously with the required high mounted crossing lamps,
6. The flash may alternate corner to corner or top to bottom locations simultaneously,
7. The lamps not meeting J887 must be designed as a warning type lamp,
8. Two lamps must be mounted on the front and two on the rear of the school bus immediately above the bumpers and as close to the outside width of the vehicle as is practicable as vehicle design will allow.

50 Wolf Road, Albany, NY 12232 | www.dot.ny.gov

ALL of our Service Updates can be found on the [New York Bus Sales website](#)
Or at the [New York Head Mechanic website](#)



This approval reference to any specific product, service, process, or method does not constitute an implied or expressed recommendation or endorsement of said product, and makes no warranties or representations, expressed or implied, as to the fitness for particular purpose or merchantability of any product, apparatus, or service, or the usefulness, completeness, or accuracy of any processes, methods, or other information contained, described, or disclosed within the product documentation.

Sincerely,



Rusty Seastrum
Chief Technician

ALL of our Service Updates can be found on the [New York Bus Sales website](#)
Or at the [New York Head Mechanic website](#)

LOREM IPSUM DOLOR SIT AMET, CONSECTETUR ADIPISCING ELIT

Lorem ipsum dolor sit amet, consectetur adipiscing elit. In faucibus molestie pharetra. Mauris aliquam imperdiet. Donec id sagittis nibh. Nulla sed venenatis ex.

ALL of our Service Updates can be found on the [New York Bus Sales website](#)
Or at the [New York Head Mechanic website](#)



CONTACT OUR SERVICE OR PARTS DEPARTMENT WITH ANY QUESTIONS

SERVICE

Chittenango: 800-962-5768
Daryl Wallace or Brian Lamaitis

Rochester: 800-463-3232 Dave Schaub

Albany: 866-867-1100 Ben Reiling

Warranty: 800-962-5768
Morgan Jenkins
Customer Service Representatives

Eastern Region:
Gary Bigness
845-500-3707

Central Region:
JJ Richmond
315-559-3999

Western Region:
Mike Panzica
716-908-3186

PARTS

Director of Parts
Jim Hogan
jhogan@newyorkbussales.com
607-227-5794

Chittenango: 800-962-5768
Gari McQuade
gmcquade@newyorkbussales.com
Bill Cox
bcoc@newyorkbussales.com
John Lewin
jlewin@newyorkbussales.com
Dave Grant
dgrant@newyorkbussales.com

Albany: 866-867-1100
Sean Conway
sconway@newyorkbussales.com
Pat Murphy
pmurphy@newyorkbussales.com

Rochester: 800-463-3232
Dave Cook
dcook@newyorkbussales.com
Steve Hibbard
shibbard@newyorkbussales.com

ALL of our Service Updates can be found on the [New York Bus Sales website](#)
Or at the [New York Head Mechanic website](#)

