



Downloading Cummins ECM Images

TECH TIP #17-1110



INSITE JOB IMAGE INSTRUCTIONS

Every Cummins engine is built and given a “serial” number. When ordering parts, we need that number to ensure the proper parts are given. Now with electronic controls the ECM or computer for the engine is configured in such a way as to properly operate the engine as designed with the options the unit has. If needed, it is possible to go through the process of configuring an ECM by going through line by line. This task can take time and can be challenging. To avoid this, we recommend that if you have Insite, download an ECM “image” that can be used should there be an issue that information is lost from the ECM.

Below are instructions on how to download and ECM Image:

ALL of our Service Updates can be found on the [New York Bus Sales website](#)
Or at the [New York Head Mechanic website](#)



Insite Job Image Instructions

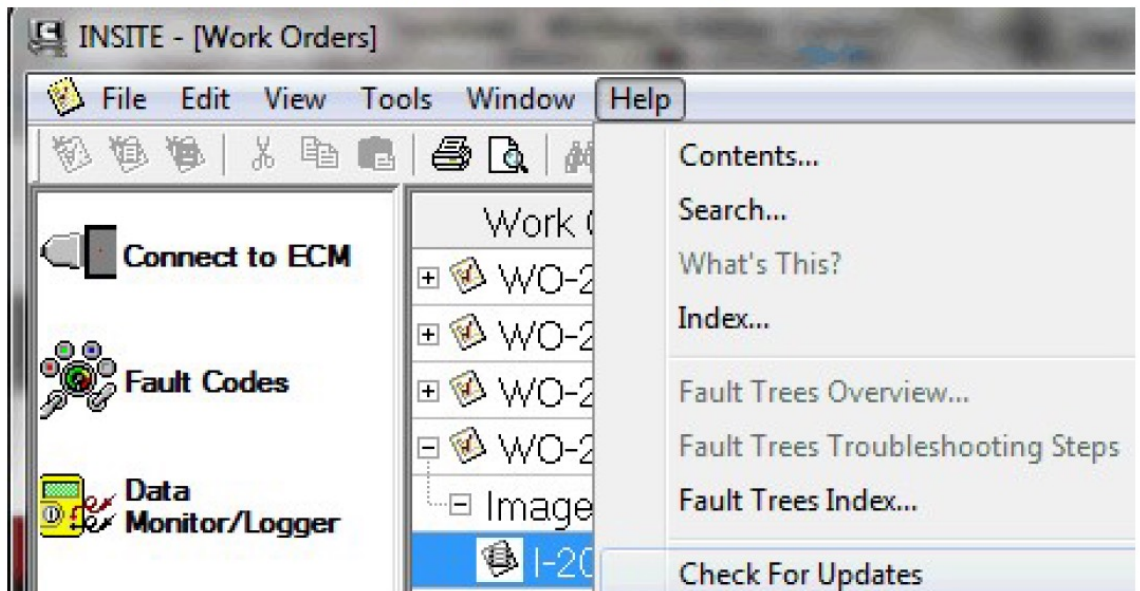


ALL of our Service Updates can be found on the [New York Bus Sales website](#)
Or at the [New York Head Mechanic website](#)



Ensure Insite And Inline Are Updated

- Update INSITE using update manager on Insite



ALL of our Service Updates can be found on the [New York Bus Sales website](#)
Or at the [New York Head Mechanic website](#)

Ensure Insite And Inline Are Updated

- Update INLINE at inline.cummins.com



ALL of our Service Updates can be found on the [New York Bus Sales website](#)
Or at the [New York Head Mechanic website](#)



Why Capture An ECM Job Image?

- Dealer Technical Support may request an ECM job image to guide further troubleshooting steps.
- Certain failure modes require a saved image, not limited to but including:
 - Aftertreatment failures,
 - Catastrophic failures,
 - Failures exceeding \$5,000
- Complete list found in section 111-502-003 of the Warranty Administration Manual on QSOL
- These instructions illustrate how to create an Insite work order and how to export the image in the desired format.

6

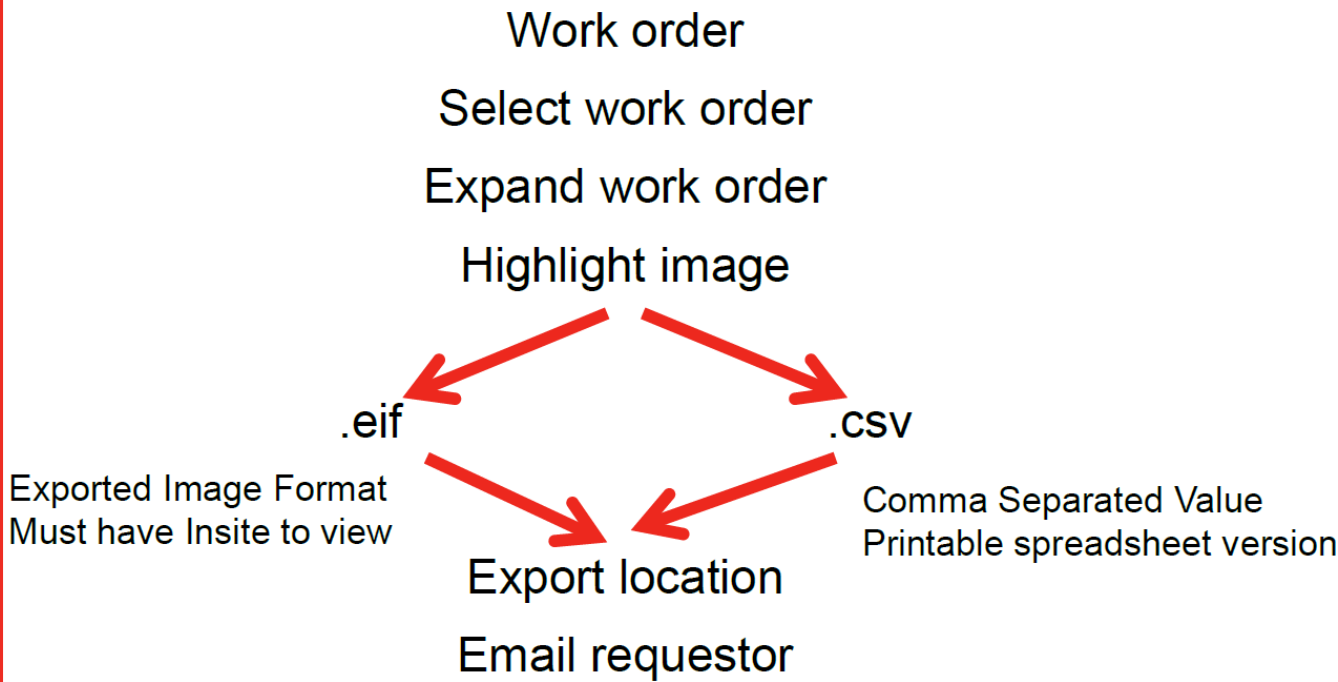
2/17/2011



ALL of our Service Updates can be found on the [New York Bus Sales website](#)
Or at the [New York Head Mechanic website](#)



Process Overview



ALL of our Service Updates can be found on the [New York Bus Sales website](#)
Or at the [New York Head Mechanic website](#)



Instructions On How To Create An Insite™ Image

First, connect Insite to the ECM, and create a work order.

Work Order	
Engine Information	
ECM Serial Number	200054
Make	CMMNS
Model	ISB260
Serial Number	15012345
Image-CM2250 [0]	
File Location	C:\Intelect\INSITE\WorkOrders\I-20110207-152643991
Image Name	I-20110207-152643991
Start Repair Date	07-Feb-2011 03:26:43 PM
System Type	Initial
Summary Information	
Customer Contact	Columbus, Indiana
Customer Name	Customer
Last Modified	
Technician's Note	

8

2/17/2011



ALL of our Service Updates can be found on the [New York Bus Sales website](#)
Or at the [New York Head Mechanic website](#)



Creating A Work Order

Click on the “work orders” icon at the left of the screen.



ALL of our Service Updates can be found on the [New York Bus Sales website](#)
Or at the [New York Head Mechanic website](#)



Locating The Work Order

Locate the desired work order, and click on the plus sign next to it.

Work Orders/ECM Images	System Type
<input checked="" type="checkbox"/> WO-59019A	ISX 11.9/15 CM2250
<input checked="" type="checkbox"/> WO-20110131-090703	ISX - CM871
<input checked="" type="checkbox"/> WO-20110128-155507	ISX 11.9/15 CM2250
<input checked="" type="checkbox"/> WO-20110128-151026	ISC - CM2150D
<input checked="" type="checkbox"/> WO-20110127-100521	ISX 11.9/15 CM2250
<input checked="" type="checkbox"/> WO-20110118-161008	ISX 11.9/15 CM2250
<input checked="" type="checkbox"/> WO-20101130-081926	ISC - CM2150D
<input checked="" type="checkbox"/> WO-20110114-115325	ISX - CM871

10 2/17/2011



ALL of our Service Updates can be found on the [New York Bus Sales website](#)
Or at the [New York Head Mechanic website](#)



Expanding The Work Order

This will expand the work order, showing the image file below it.

Work Orders/ECM Images	System Type
+ WO-59019A	ISX 11.9/15 CM2250
- WO-20110131-090703	ISX - CM871
- Image-CM871 [0]	
I-20110131-090703093	Initial
+ WO-20110128-155507	ISX 11.9/15 CM2250

2/17/2011



ALL of our Service Updates can be found on the [New York Bus Sales website](#)
Or at the [New York Head Mechanic website](#)



Highlight The Image And Right Click To Bring Up An Options Menu.

Work Orders/ECM Images	System Type
WO-20110128-155507	ISX 11.9/15 CM2250
WO-20110209-153023	ISL - CM2150D
WO-20110207-144654	ISB6.7 CM2250
WO-20101115-163251	ISB6.7 CM2250
Image-CM2250 [0]	
WO-20101115-163251	
WO-20101222-1	
WO-20101202-1	
WO-20101020-2	
WO-20101122-1	
WO-20101130-0	
WO-20101112-1	
WO-20110104-1	
WO-20101110-0	
WO-20110128-151026	ISC - CM2150D

- Connect to Image
- Convert to Template(s)
- Export Image(s)
- Export All Images
- Export Image(s) to External File
- Print ECM Image(s)...
- Delete Image(s)...
- Properties...

12

2/17/2011

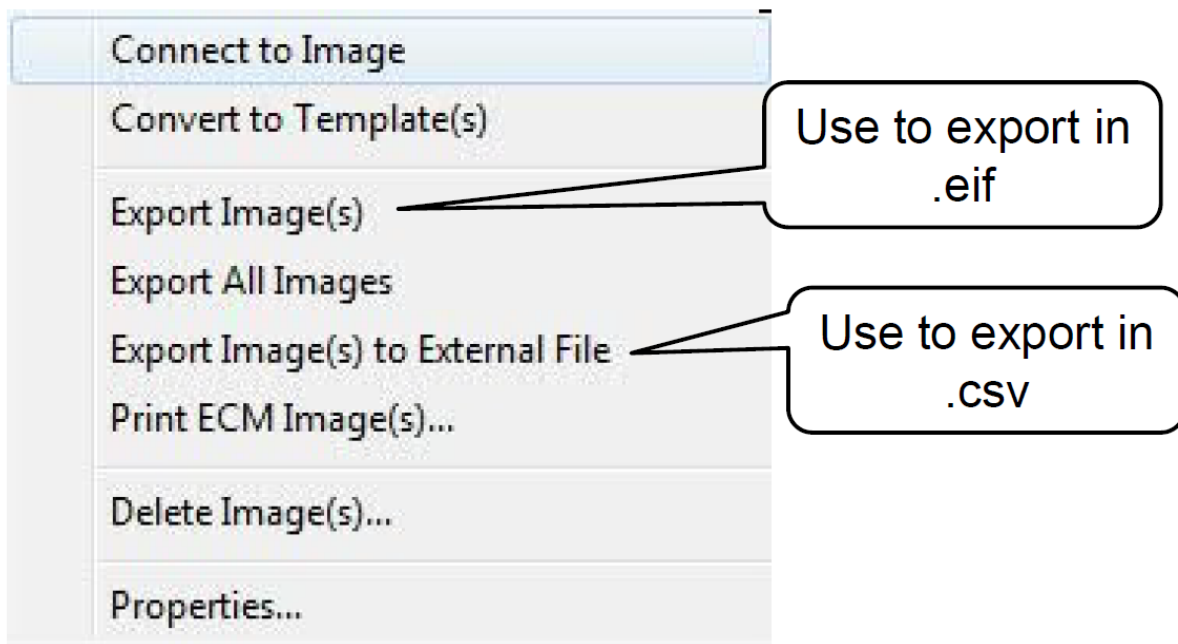


ALL of our Service Updates can be found on the [New York Bus Sales website](#)
Or at the [New York Head Mechanic website](#)

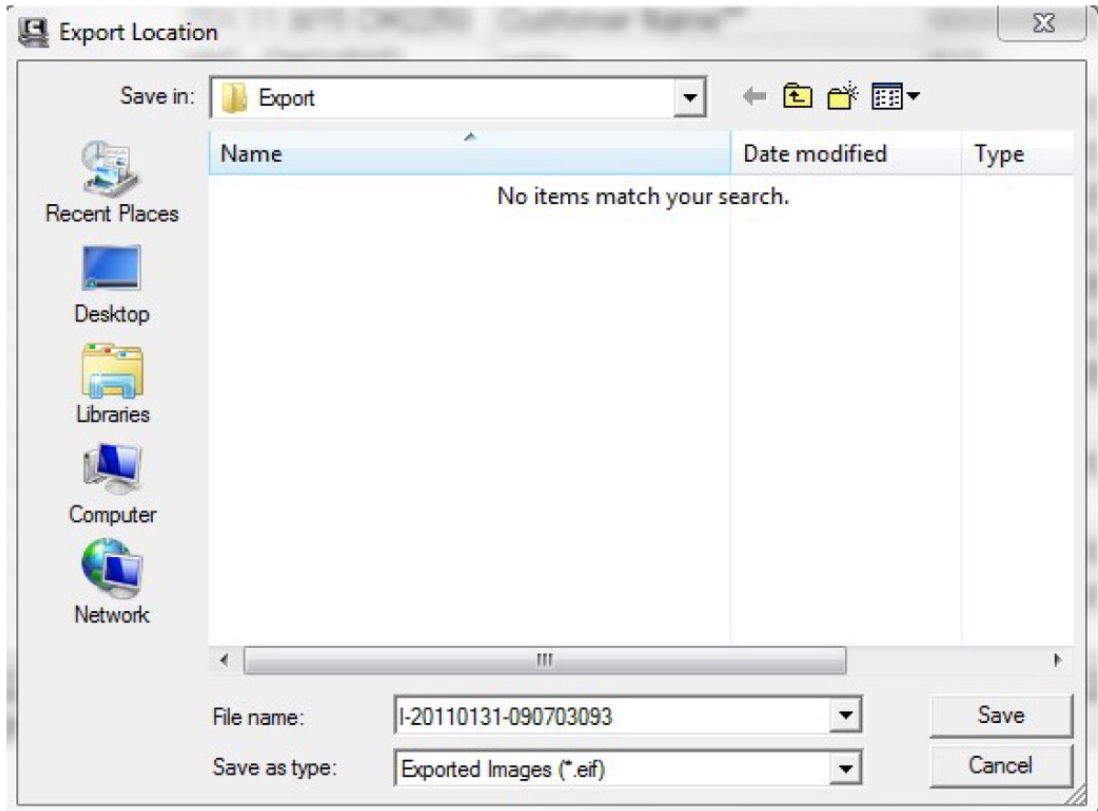


Select Format

Select "export image" (for .eif) or "export to external file" (for .csv).



Export Screen



14 2/17/2011

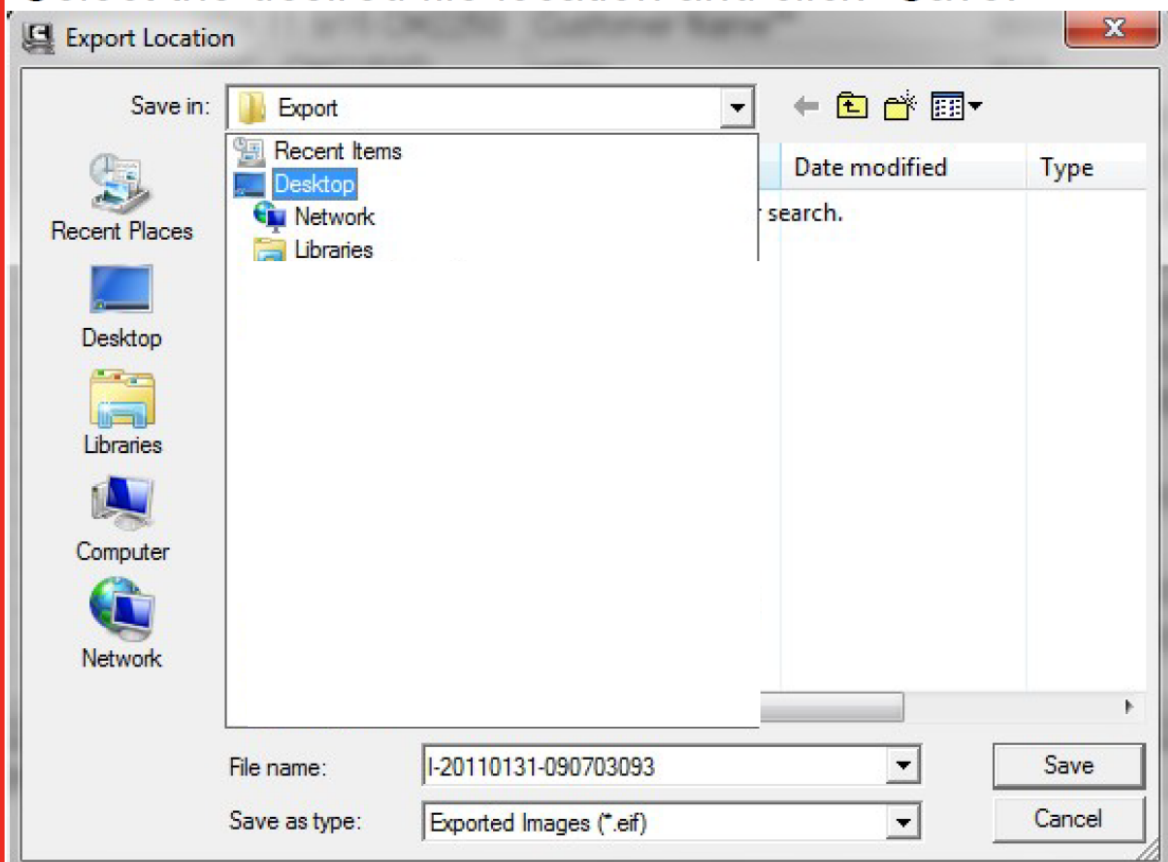


ALL of our Service Updates can be found on the [New York Bus Sales website](#)
Or at the [New York Head Mechanic website](#)



Saving The File

Select the desired file location and click “Save.”



ALL of our Service Updates can be found on the [New York Bus Sales website](#)
Or at the [New York Head Mechanic website](#)



CONTACT OUR SERVICE OR PARTS DEPARTMENT WITH ANY QUESTIONS

SERVICE

Chittenango: 800-962-5768
Daryl Wallace or Brian Lamaitis

Rochester: 800-463-3232
Dave Schaub

Albany: 866-867-1100
Ben Reiling

Warranty: 800-962-5768
Morgan Jenkins

**Customer Service
Representatives**

Eastern Region:
Gary Bigness
845-500-3707

Central Region:
JJ Richmond
315-559-3999

Western Region:
Mike Panzica
716-908-3186

PARTS

Director of Parts
Jim Hogan
jhogan@newyorkbussales.com
607-227-5794

Chittenango: 800-962-5768
Gari McQuade
gmcquade@newyorkbussales.com
Bill Cox
bcox@newyorkbussales.com
John Lewin
jlewin@newyorkbussales.com
Dave Grant
dgrant@newyorkbussales.com

Albany: 866-867-1100
Sean Conway
sconway@newyorkbussales.com
Pat Murphy
pmurphy@newyorkbussales.com

Rochester: 800-463-3232
Dave Cook
dcook@newyorkbussales.com
Steve Hibbard
shibbard@newyorkbussales.com

ALL of our Service Updates can be found on the [New York Bus Sales website](#)
Or at the [New York Head Mechanic website](#)

