



Electrical Connections/Studs

Electrical Tech Tip #18-0408

CHECKING YOUR ELECTRICAL CONNECTIONS IS IMPORTANT AND CAN SAVE BREAKDOWNS AND DIAGNOSTIC HEADACHES

This Tech Tip is NOT particular to any specific Blue Bird product, nor is it specific to any vehicle that New York Bus Sales provides. This is a “GENERAL” Tech Tip which relates to ALL those units which are used in the transportation of children!

This may require you putting some effort into finding locations of particular electrical components on your vehicles or just looking and paying attention when servicing units.

We find ourselves in an industry where vehicles that we use are many times spec'd specifically for our use. In doing so they may be constructed and assembled differently than even the unit right behind it on the assembly line and once we put units into service, each of us may use them much differently.

- Keeping our eyes open when servicing units is key to spotting issues before they become breakdowns. An example of that is shown in Figures #1 and #2 which shows a W/C lift supply stud which was found to be corroded once the lift was acting up and left a student stranded. As you can see in Figure #2 once the new stud was replaced, there is clear evidence streaming down the frame that there was an issue that went undetected
- There are some issues which cannot be detected as in Figure #3, which is the stud of an alternator that was loose. In these cases, actually grabbing the wire and seeing if it is tight could prevent an issue.

ALL of our Service Updates can be found on the [New York Bus Sales website](#)
Or at the [New York Head Mechanic website](#)

- Not all studs/connections or locations where issues could occur are right out in the open which means some research may be in order and the best place for that is your “Service Manual.” Examples of helpful material found in the Blue Bird Service Manual are shown in Figures #4 and #5 where you can see studs located where you might not be able to easily spot if you were not aware they were there.
- Another overlooked issue is with “bolt type” battery terminals as used on the type 8D batteries. They can crack and not make a good connection which will cause power loss.
- With today’s units and the use of electronics, voltage drops and sudden power loss for short times can cause many issues. Please keep in mind what can be done before those items cause a breakdown.

ALL of our Service Updates can be found on the [New York Bus Sales website](#)
Or at the [New York Head Mechanic website](#)





Figure #1

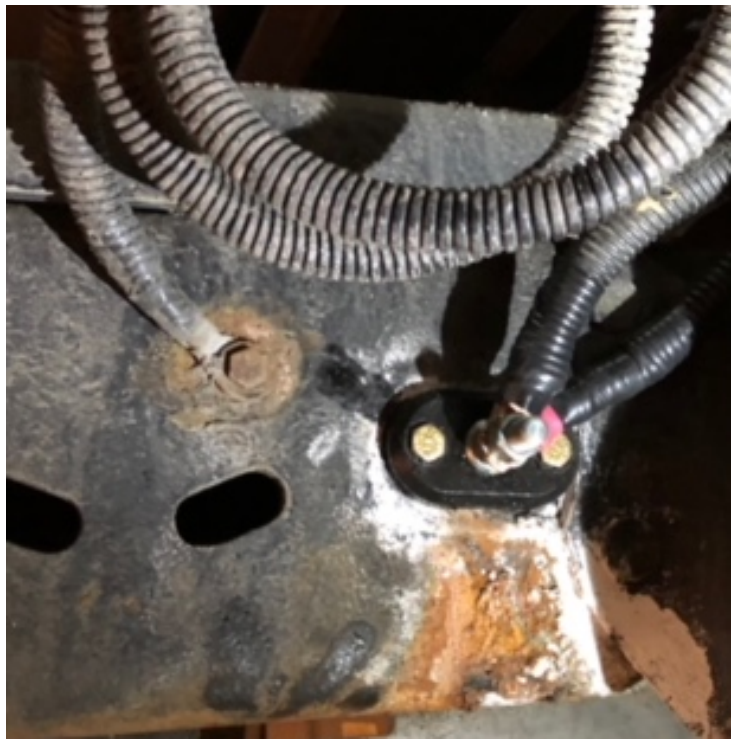
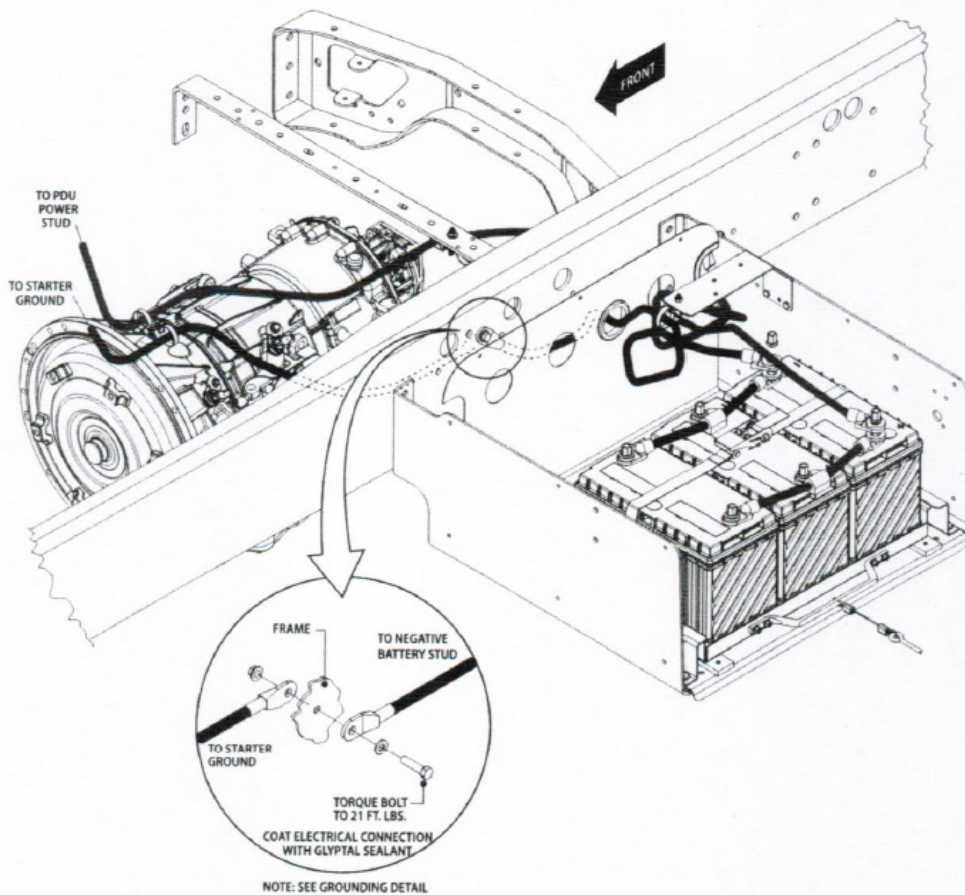


Figure #2

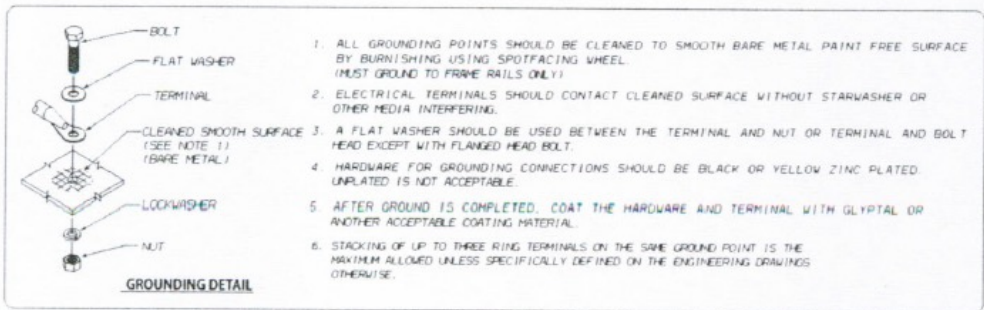


Figure #3

ALL of our Service Updates can be found on the [New York Bus Sales website](#)
Or at the [New York Head Mechanic website](#)



1155



Battery Cable Routing - Sheet 1-4
 D0015062E
 CHASSIS HARNESS ROUTING, ISBT3

Figure #4

ALL of our Service Updates can be found on the [New York Bus Sales website](#)
 Or at the [New York Head Mechanic website](#)

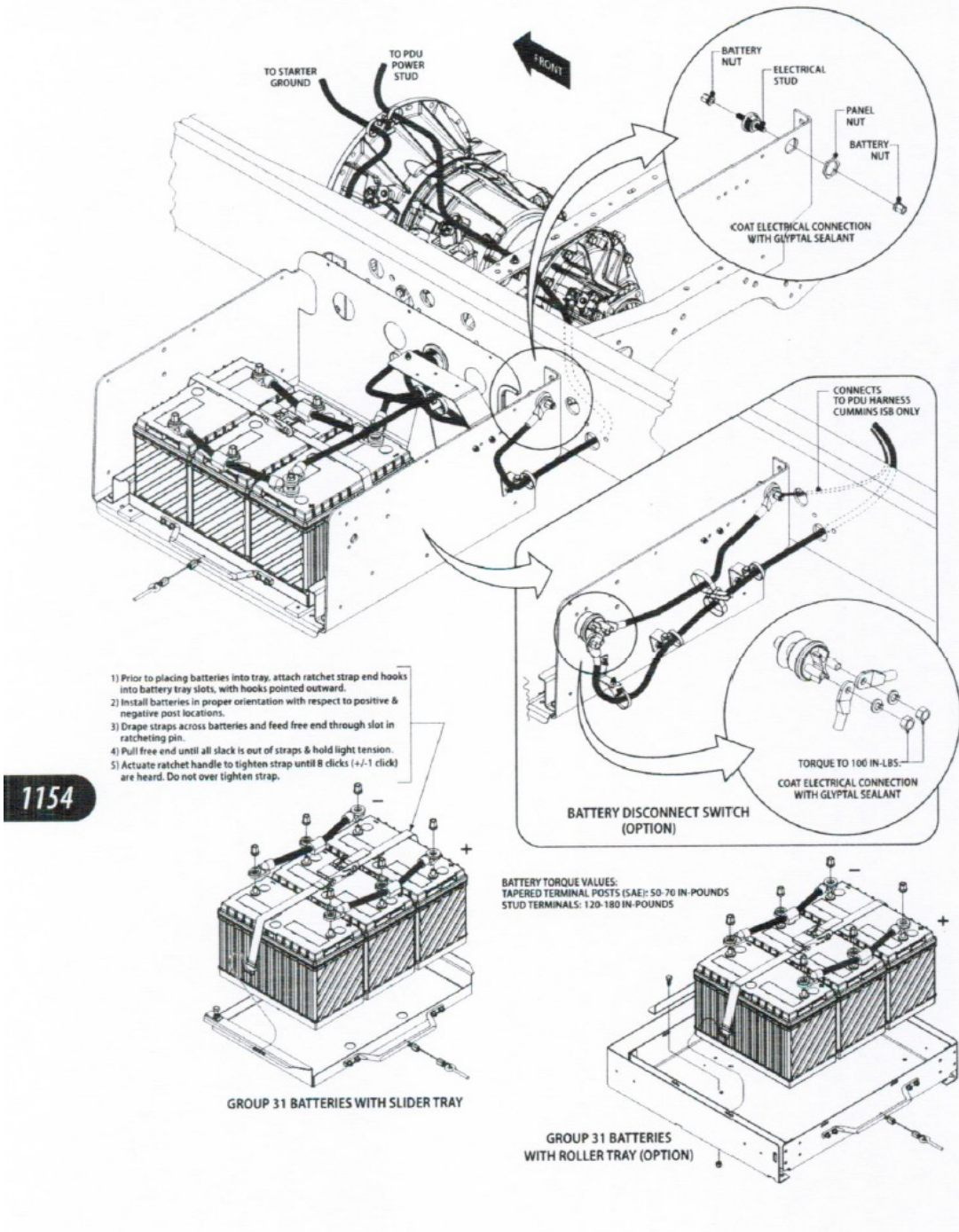


Figure #5

ALL of our Service Updates can be found on the [New York Bus Sales website](#)
Or at the [New York Head Mechanic website](#)

CONTACT OUR SERVICE OR PARTS DEPARTMENT WITH ANY QUESTIONS

SERVICE

Chittenango: 800-962-5768
Daryl Wallace or Brian Lamaitis

Rochester: 800-463-3232
Dave Schaub

Albany: 866-867-1100
Ben Reiling

Warranty: 800-962-5768
Morgan Jenkins

**Customer Service
Representatives**

Eastern Region:
Gary Bigness
845-500-3707

Central Region:
Josh Coon
315-263-0765

Western Region:
Mike Panzica
716-908-3186

PARTS

Director of Parts
Jim Hogan
jhogan@newyorkbussales.com
607-227-5794

Chittenango: 800-962-5768
Gari McQuade
gmcquade@newyorkbussales.com
Bill Cox
bcox@newyorkbussales.com
John Lewin
jlewin@newyorkbussales.com
Dave Grant
dgrant@newyorkbussales.com

Albany: 866-867-1100
Sean Conway
sconway@newyorkbussales.com
Pat Murphy
pmurphy@newyorkbussales.com

Rochester: 800-463-3232
Dave Cook
dcook@newyorkbussales.com
Steve Hibbard
shibbard@newyorkbussales.com

ALL of our Service Updates can be found on the [New York Bus Sales website](#)
Or at the [New York Head Mechanic website](#)

