



Crossover Mirror Base Upgrade

Tech Tip #18-0623



Upgrade the Mirror Base of the Crossover Mirrors

As previously communicated, Blue Bird and Rosco have worked together to improve the design of the mirror mounting on the Vision product. There were previous updates to the base as cracking had been seen (FIGURE #1).

The previous updates helped, but those 2 seasons we have in New York (Winter & Road Construction) has still caused some units to continue to see these issues.

ALL of our Service Updates can be found on the [New York Bus Sales website](#)
Or at the [New York Head Mechanic website](#)

New York Bus Sales compared the 2 designs and has come up with a method to upgrade the previous base to the new design (FIGURE #2)

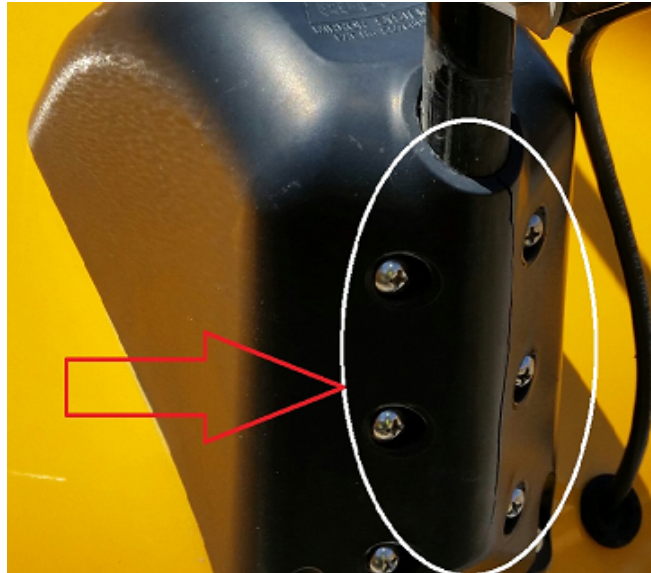


FIGURE #1



FIGURE #2

ALL of our Service Updates can be found on the [New York Bus Sales website](#)
Or at the [New York Head Mechanic website](#)



There are a right (Part #10053095) and left (Part #10053094) base mount as shown in FIGURE #3.

Each side consists of 3 separate pieces (Figure #4), the actual base, a tapered plastic “farrell” and a locking nut.



FIGURE #3



FIGURE #4

The new base uses the same footprint on the hood, the main issue with the upgraded bracket is the tube O.D. The original has a $\frac{3}{4}$ " O.D. where the new design has a 1" O.D. to address this we have found polycarbonate tubing, $\frac{3}{4}$ " ID x 1" OD x $\frac{1}{8}$ " wall to act as a bushing over the original mirror bracket.

Step #1 – Remove the bolts at the bell mounts holding the support brackets and loosen the 6 phillipshead screws holding the main bracket to the base (FIGURE #5)

Step #2 – Open the hood and using a “zip” tie, secure the mirror to the bell mount. Remove the old base and install the updated base. (FIGURE #6 & #7)

ALL of our Service Updates can be found on the [New York Bus Sales website](#)
Or at the [New York Head Mechanic website](#)





FIGURE #5



FIGURE #6

Step #3 – Using the 3” poly tube, push onto the bottom of the mirror bracket (FIGURE #8) until the mirror bracket is completely through the tube and the end of the bracket and tube are even. **PLEASE NOTE: The bracket may need to be cleaned with an abrasive wheel and silicone used to aid in slipping the tube on the bracket. It should be a tight fit as the new base clamps around the bracket.**

Step #4 – Clip the “zip” tie holding the mirror, slip the nut over the end of the bracket and push the farrell over the tube (wide end first). Slip the bracket into the base (FIGURE #9) and loosely tighten the nut (FIGURE #10) – As you can see the tube should protrude through the nut slightly.

ALL of our Service Updates can be found on the [New York Bus Sales website](#)
Or at the [New York Head Mechanic website](#)





FIGURE #7



FIGURE #8



FIGURE #9



FIGURE #10

ALL of our Service Updates can be found on the [New York Bus Sales website](#)
Or at the [New York Head Mechanic website](#)

Step #5 – Next reinstall the support brackets at the bell mounts.

PLEASE NOTE: The new base slightly changes the position of the bracket relative to the bell mounts. The forward support can be easily adjusted along the horizontal portion of the bracket, but the rear support will need to mount at the bend of the bracket which was actually believed to get even more support (FIGURE #11).

Should you not like the looks of that positioning, a shorter support rod can be used. Part #10059644 for Stainless Steel and Part #10059642 for Painted.

Step #6 – Tighten the nut at the base around the Farrell.

Step #7 – Repeat on the opposite side

Step #8 – Adjust Mirrors



FIGURE #11

ALL of our Service Updates can be found on the [New York Bus Sales website](#)
Or at the [New York Head Mechanic website](#)

REQUIRED PARTS

1- #10053095 \$20.29

BASE,MIRROR,PASS SIDE,SPIN LOC,CV

1- #10053094 \$20.29

BASE,MIRROR,DRIVER SIDE,SPIN LOC,CV

1- #NYB/0046 \$10.45

POLYCARBONATE TUBING,3/4"IDx1"ODx3" [2/PK]

ALL of our Service Updates can be found on the [New York Bus Sales website](#)
Or at the [New York Head Mechanic website](#)



CONTACT OUR SERVICE OR PARTS DEPARTMENT WITH ANY QUESTIONS

SERVICE

Chittenango: 800-962-5768
Daryl Wallace or Brian Lamaitis

Rochester: 800-463-3232
Dave Schaub

Albany: 866-8671100
Ben Reiling

Middletown: 845-609-7070
Marc Matjec

Warranty: 800-962-5768
Morgan Jenkins

Customer Service Representatives

Eastern Region:
Gary Bigness
845-500-3707

Central Region:
JJ Richmond
315-559-3999

Western Region:
Mike Panzica
716-908-3186

PARTS

Director of Parts
Jim Hogan
jhogan@newyorkbussales.com
607-227-5794

Chittenango: 800-962-5768
Gari McQuade
gmcquade@newyorkbussales.com
Bill Cox
bcoc@newyorkbussales.com
John Lewin
jlewin@newyorkbussales.com
Dave Grant
dgrant@newyorkbussales.com

Albany: 866-867-1100
Sean Conway
sconway@newyorkbussales.com
Pat Murphy
pmurphy@newyorkbussales.com

Rochester: 800-463-3232
Dave Cook
dcook@newyorkbussales.com
Steve Hibbard
shibbard@newyorkbussales.com

ALL of our Service Updates can be found on the [New York Bus Sales website](#)
Or at the [New York Head Mechanic website](#)

