



100 Gallon Diesel Fuel Tank #10015138 Replaced by #10058732 Parts Update #18-1010



Some Modifications “MAY” be Required When the Updated Tank is Installed

Recently we learned that the 100 gallon fuel tank previously manufactured had changed slightly, which caused some issues when being replaced on older units.

There are actually 2 items which may need to be addressed as part of the install:

- The first is that if your sending unit has a weaththerpac connector, part #10052483 (Figure #1) should be purchased so that the harness does not need to be compromised.
- The second is the fact that the fuel supply port on the new tank is located in the center of the tank, which puts it about 30” to the rear of the unit from its initial location.

ALL of our Service Updates can be found on the [New York Bus Sales website](#)
Or at the [New York Head Mechanic website](#)

Figure #2 shows both an old tank and the new replacement tank with the corresponding locations for the various items-



Tank Vent/Same Location



Sending Unit/Same Location



Fuel Return /Same location



Fuel Fill/Same Location



Fuel Fill Vent/Same Location



Fuel Supply/Moved from front of tank near fuel fill back to the center of the tank by the vent

PLEASE NOTE: To maintain “fuel integrity”, there are to be no splices or unions in the fuel supply line.

On older BBCV units, especially where the fuel/water separator is mounted on the frame above the rear axle, the supply and return lines were run in such a manner that there was a “loop” of extra line – Please see item #6 & #7 in Figure #3. Prior to removing the tank, you can verify this by looking between the tank and frame rail where you can actually see the loop of each line (Figure #4 & #5). If this is the case, there should be enough fuel supply line to reach the new location.

On BBCV units where the fuel/water separator is mounted on the VCM (firewall) Blue Bird Engineering has determined that there is enough supply line run to the replacement tank, but there may not be enough to connect to the tank while it is below the frame rails. To address this issue, it is recommended to disconnect the supply line from the fuel/water separator to gain extra “slack” at the tank (Figure #6).

You can also purchase both fuel supply (Part #10024333) and fuel return (Part #00082608)

ALL of our Service Updates can be found on the [New York Bus Sales website](#)
Or at the [New York Head Mechanic website](#)



Figure #1

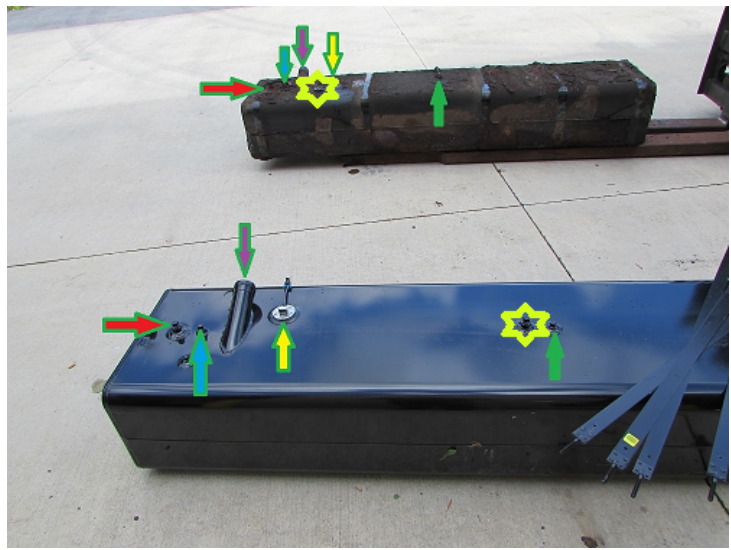


Figure #2

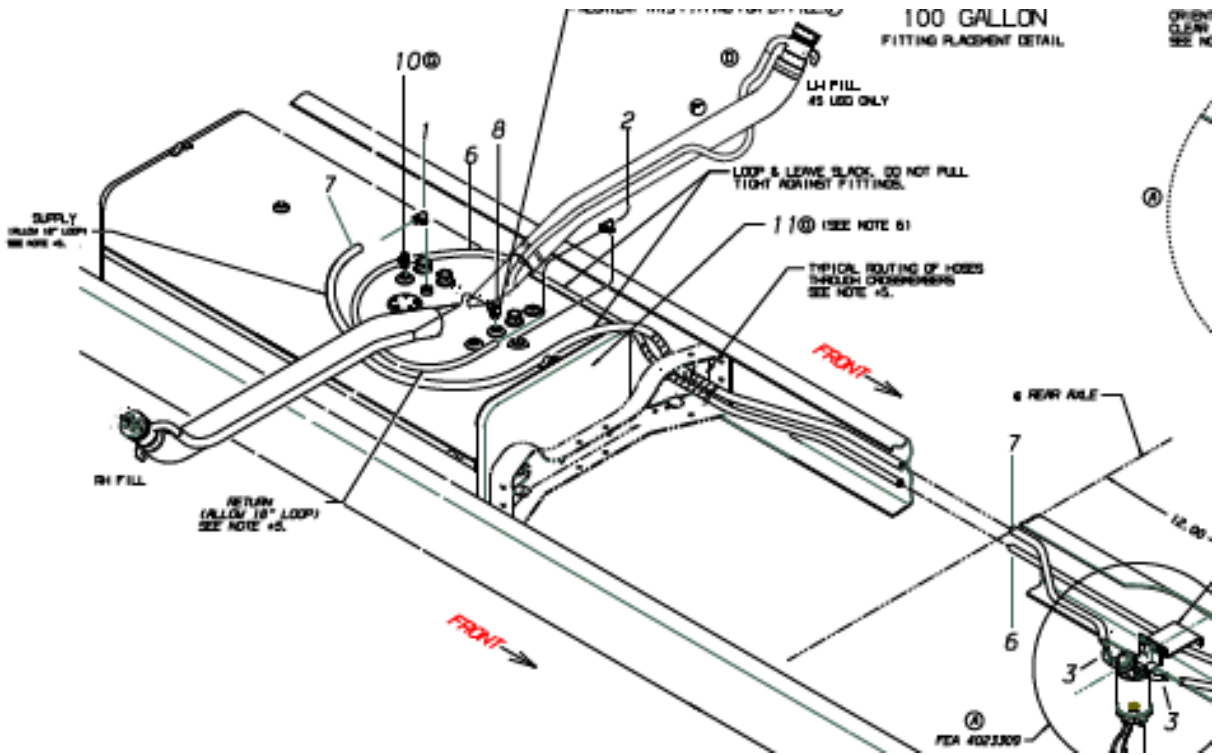


Figure #3

ALL of our Service Updates can be found on the [New York Bus Sales website](#)
Or at the [New York Head Mechanic website](#)





Figure #4

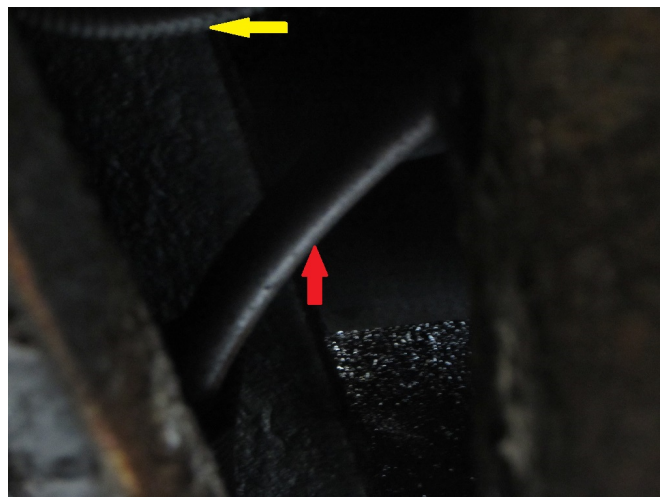


Figure #5

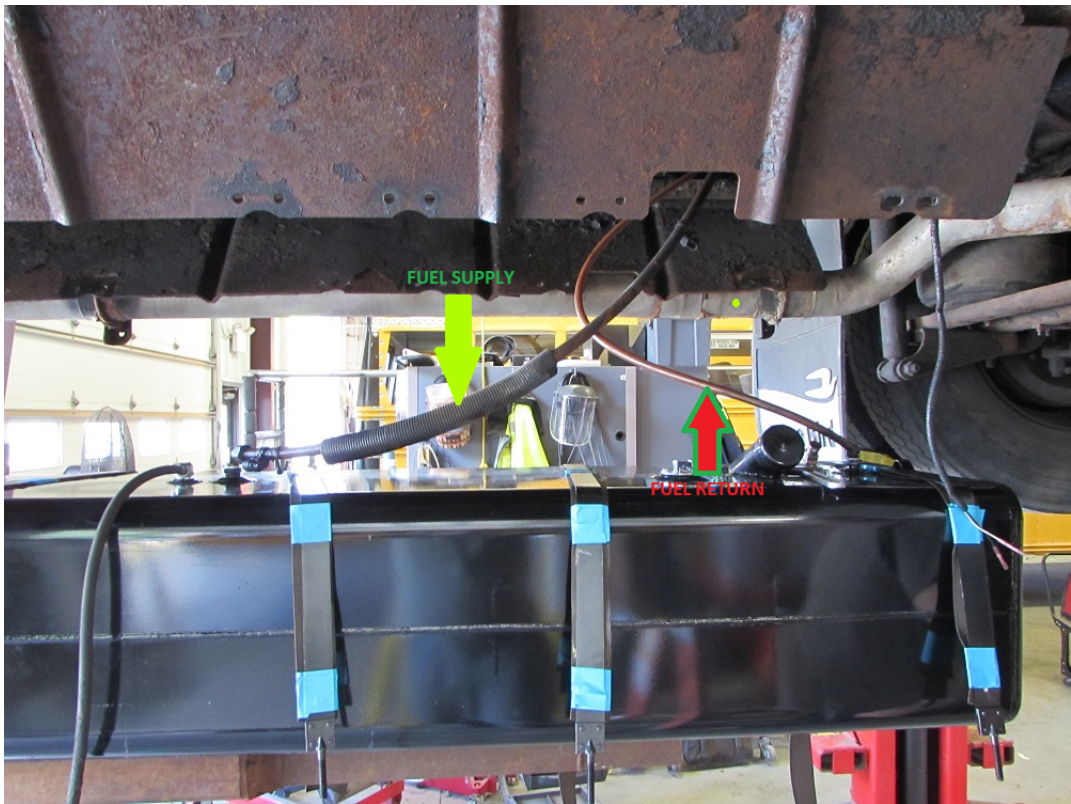


Figure #6

ALL of our Service Updates can be found on the [New York Bus Sales website](#)
Or at the [New York Head Mechanic website](#)



CONTACT OUR PARTS DEPARTMENT WITH ANY QUESTIONS

Director of Parts

Jim Hogan

jhogan@newyorkbussales.com

607-227-5794

Chittenango: 800-962-5768

Gari McQuade

gmcquade@newyorkbussales.com

Bill Cox

bcox@newyorkbussales.com

John Lewin

jlewin@newyorkbussales.com

Dave Grant

dgrant@newyorkbussales.com

Albany: 866-867-1100

Sean Conway

sconway@newyorkbussales.com

Pat Murphy

pmurphy@newyorkbussales.com

Rochester: 800-463-3232

Tim Gross

tgross@newyorkbussales.com

Steve Hibbard

shibbard@newyorkbussales.com

ALL of our Service Updates can be found on the [New York Bus Sales website](#)
Or at the [New York Head Mechanic website](#)

