



Micro Bird Entrance Door Adjustment SERVICE NOTICE #18-1218



Updated Entrance Door Adjustment Procedures

Micro Bird has released an updated Service Bulletin for adjustment of the entrance door.

Please find it attached!

ALL of our Service Updates can be found on the [New York Bus Sales website](#)
Or at the [New York Head Mechanic website](#)

Micro Bird Inc

SERVICE BULLETIN

TITLE: Passenger entrance door adjustment

TO: Micro Bird dealers

PRODUCT: Micro Bird buses

FROM: After Sales and Warranty department

PLANNING

Description

The following adjustment procedure is valid for all Micro Bird buses.

Compliance

The warranty claim must be placed with Micro Bird within 45 days from the date of repair.

Manpower Labor : .5 hr

Note: *It is recommended to read the entire procedure before performing repairs.*

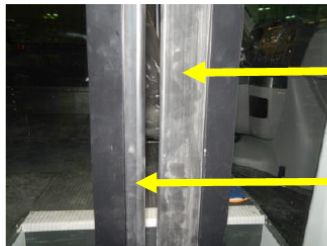
Note: *It is assumed that all of the procedures required to embody this modification will be performed according to professionally accepted standards.*

TOOLING REQUIRED

Qty	Description
1	9/16 wrench
1	Phillips screwdriver

PROCEDURE

Step 1: While standing outside the bus, make sure the entrance door seals are installed correctly.



Large rubber seal on right door. Flat side out.

Small rubber on the left door.

2018-12-13

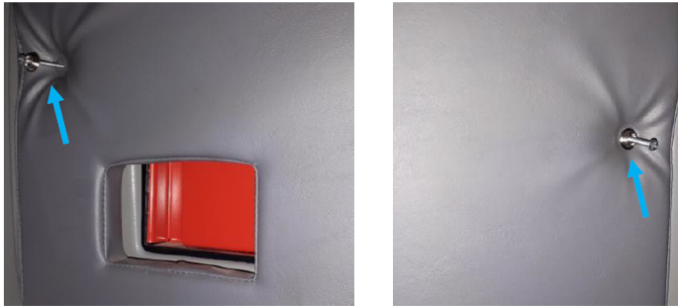
MBSB-103-18 English rev. 1

1/4

ALL of our Service Updates can be found on the [New York Bus Sales website](#)
Or at the [New York Head Mechanic website](#)



Step 2: Remove the head pad above the entrance doors.



**** Make sure to ALWAYS adjust the doors with the rods. NEVER bend the switch tab as what was previously done to perform adjustment.**

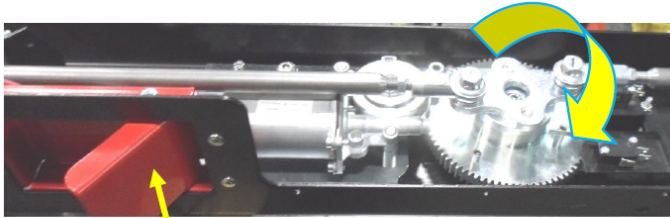
Step 3: Door mechanism adjustment

1. Open the emergency exit to release tension on the threaded rods.
2. Unscrew both nuts at the end of each rod.



Nuts to unscrew

3. **Make sure the tab of the microswitch is straight. If not it will need to be straightened before proceeding to the next steps.**
4. Turn the gear clockwise until it comes to a stop when it hits the stud on the motor plate. When you turn it, if the rods are too long and prevent the main gear to be turned enough to hit the stud of the motor plate, you will need to shorten each rod to help the gear do its complete motion. Ensure it slightly touches the tab of the microswitch and the tab is not depressed.



Open the emergency handle.



Turn the gear clockwise until it comes to a stop when it hits the stud on the motor plate.

2018-12-13

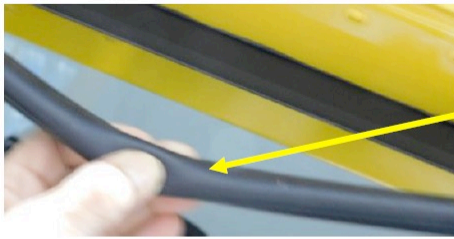
MBSB-103-18 English rev. 1

2/4

ALL of our Service Updates can be found on the [New York Bus Sales website](#)
Or at the [New York Head Mechanic website](#)

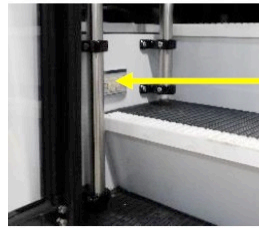


5. Pull on the center part of the upper seal. This part is fixed with sealant at both ends. Do not reach the sealed areas.



Center part of seal

6. Maintain the gear in position. Close the emergency handle. Use the console switch to close the doors. Hold the switch until the stepwell light is off. The gear will be at a precise location and the microswitch will be activated.

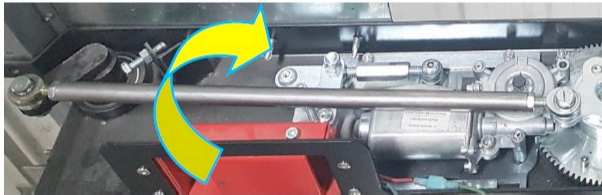


Stepwell light

7. Adjust the entrance doors using the rods starting with the right one. Turn it towards you until the right door frame hits the steel corner on top of the door. Lightly screw both nuts to secure the rod.



8. Proceed with the left rod, this time turning the rod away from you. Turn it until the top of the left door rubber seal touches the rubber seal of the right door. Lightly screw both nuts to secure the rod.





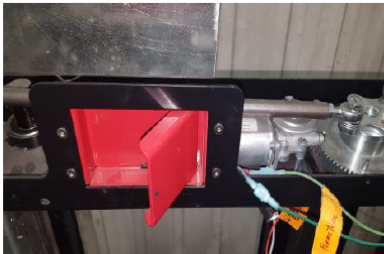
Slight contact

Both seals are touching and the left one starts to be deformed.

9. To make sure the doors are as tight as should be, the last thing to do is to turn the right rod $\frac{1}{4}$ turn towards you and turn the left rod $\frac{1}{2}$ turn away from you. Tightly secure nuts.

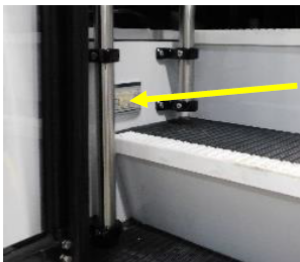
Note: If it is difficult to turn the rods, open the emergency handle to release pressure on rods. Close the emergency handle and then close the doors using the console switch.

10. At this time, you have to open the emergency exit to make sure it is not hard to open. If it is, too hard, slightly bend the tab of the front microswitch away from you.



11. Reinstall the top seal on the frame and close the doors using the console switch.

When the doors are completely shut, the stepwell light should be turned off. If that is not the case, repeat the steps. However, this second time, leave a small space between the door frame and the right door.



Stepwell light

12. Push on the doors from the inside of the bus to make sure they do not move outwards and the stepwell light stays shut.

13. When all adjustments have been completed, if desired, apply some Loctite on the nuts.

14. Reinstall head pad.

2018-12-13

MBSB-103-18 English rev. 1

4/4

ALL of our Service Updates can be found on the [New York Bus Sales website](#)
Or at the [New York Head Mechanic website](#)

CONTACT OUR SERVICE OR PARTS DEPARTMENT WITH ANY QUESTIONS

SERVICE

Chittenango: 800-962-5768
Daryl Wallace or Brian Lamaitis

Rochester: 800-463-3232
Dave Schaub

Albany: 866-867- 1100
Ben Reiling

Warranty: 800-962-5768
Morgan Jenkins

**Customer Service
Representatives**

Eastern Region:
Gary Bigness
845-500-3707

Central Region:
Josh Coon
315-263-0765

Western Region:
Mike Panzica
716-908-3186

PARTS

Director of Parts
Jim Hogan
jhogan@newyorkbussales.com
607-227-5794

Chittenango: 800-962-5768
Gari McQuade
gmcquade@newyorkbussales.com
Bill Cox
bcox@newyorkbussales.com
Dave Grant
dgrant@newyorkbussales.com

Albany: 866-867-1100
Sean Conway
sconway@newyorkbussales.com
Pat Murphy
pmurphy@newyorkbussales.com

Rochester: 800-463-3232
Tim Gross
tgross@newyorkbussales.com
Steve Hibbard
shibbard@newyorkbussales.com

ALL of our Service Updates can be found on the [New York Bus Sales website](#)
Or at the [New York Head Mechanic website](#)

