



Service Memorandum

SM1901 Electronic Stability Control (ESC) Lamps

Models Affected: Model Year 2017-2020 All American and TX4 (T3FE and T3RE) equipped with Electronic Stability Control (ESC)

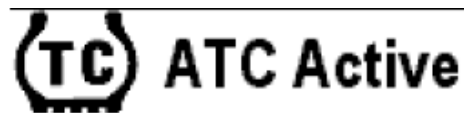
Subject: Provide driver/operator functional clarification for buses with hardwired service brake switch or stop lamp switch (SLS)

Driver/operator functional information for All American and TX4 buses equipped with Electronic Stability Control (ESC) –
At each ignition key on cycle allow instrument cluster to complete indicator lamp check, then apply and release service brake pedal. The Automatic Traction Control (ATC Active) display message or Traction Control (TC) indicator lamp will turn OFF. If either the Automatic Traction Control (ATC Active) display message or Traction Control (TC) indicator lamp remains ON, have the bus serviced by a qualified mechanic, as soon as possible.



Traction Control (TC) Indicator Lamp (Ametek Dixon Instrument Cluster)

Or



Display Message (Actia Instrument Cluster)

Service Technician Notes –

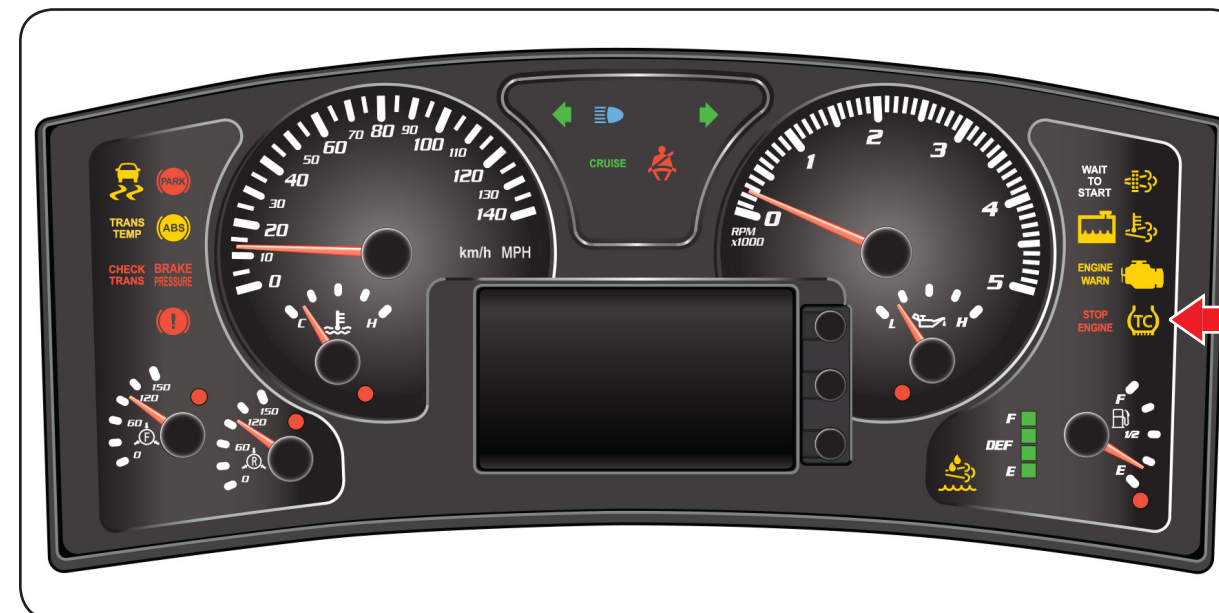
The service brake switch or stop lamp switch (SLS) status is required by Bendix® with Electronic Stability Control (ESC). On T3FE and T3RE products the service brake switch or (SLS) status is a hardwired circuit to the Bendix® ESP EC-80 Controller. Bendix® SD-13-4986 does not currently describe the first ignition key on (ATC) Lamp functions for buses with a hardwired service brake switch or (SLS).

Automatic Traction Control (ATC Active) display message or Traction Control (TC) indicator lamp functions for T3FE and T3RE (All American and TX4) with a hardwired service brake switch or (SLS)

At each ignition on cycle:

The Automatic Traction Control (ATC Active) display message or Traction Control (TC) indicator lamp will remain illuminated until the Bendix® Controller detects the service brakes have been applied and released. Once service brakes have been applied and released the Automatic Traction Control (ATC Active) display message or Traction Control (TC) indicator lamp will not illuminate again until the next ignition cycle, (provided no active traction control event and or no active Bendix® fault codes are present).

Ametek Dixon Instrument Cluster



Actia Instrument Cluster

